

Enquiries

Admission Enquiry: 2948 6886
 E-mail: admission@eduhk.hk

Programme Leader: 2948 8241
 Dr. Chan Man Ho
 E-mail: chanmh@eduhk.hk

Programme Enquiry: 2948 6438/ 2948 8591
 E-mail: mastem@eduhk.hk

Website: www.eduhk.hk/mastem

Master of Arts in STEM Education

(1-Year Full-time (A1M095) / 2-Year Part-time (C2M028))

STEM教育文學碩士

(一年全日制 (A1M095) / 兩年兼讀制 (C2M028))



The Master of Arts in STEM Education Programme

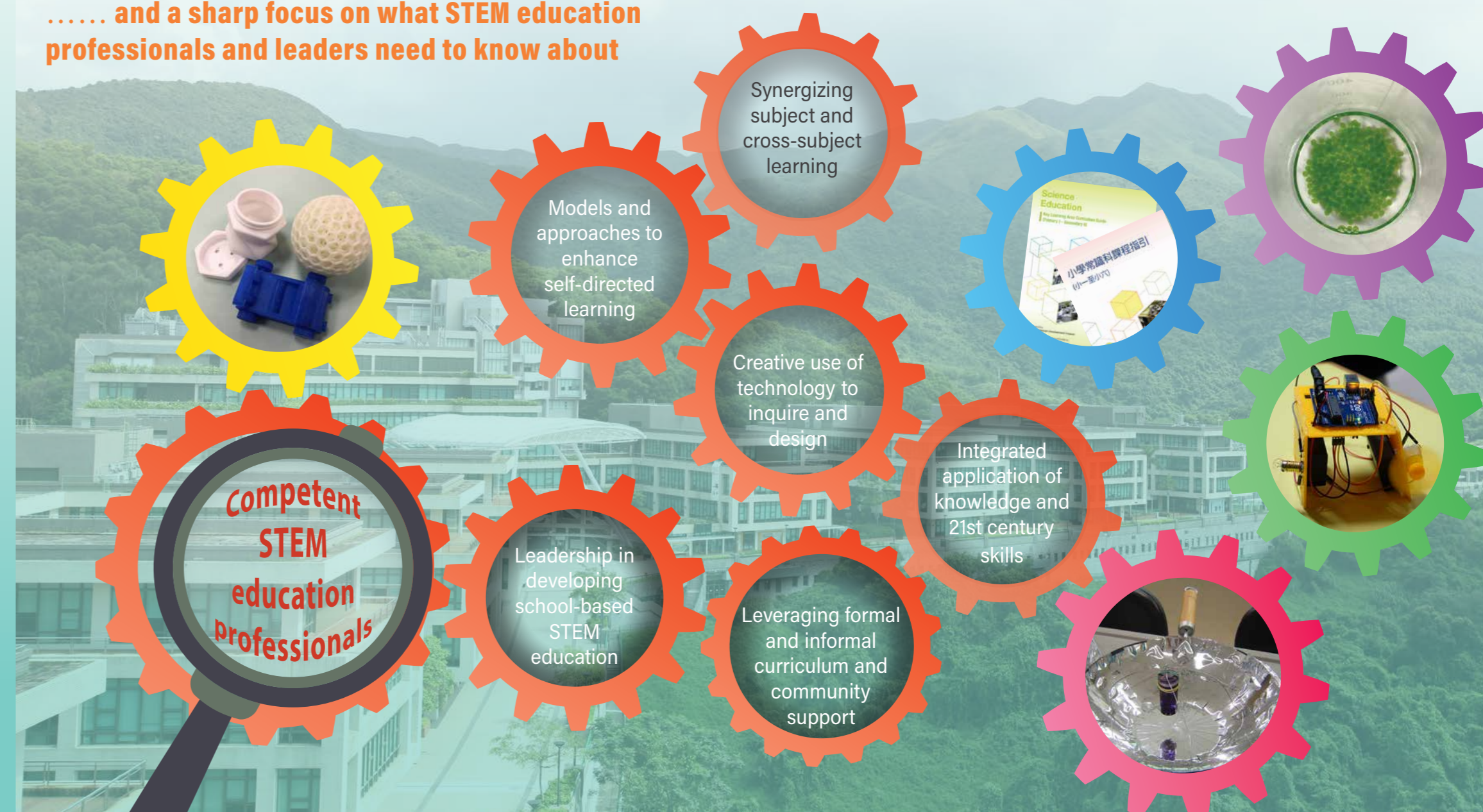
will lead you to an exciting and rewarding experience of professional development in STEM education

The programme has

..... distinctive aims to

- promote a holistic and comprehensive understanding of STEM education;
- develop competence in promoting STEM education through curriculum integration and integrated learning;
- equip participants with the knowledge and skills for applying technology and engineering design in solving problems;
- develop participants' pedagogical content knowledge for designing instructions and assessment for integrated STEM education;
- develop leadership and cultivate a spirit of innovation in promoting school-based STEM education.

..... and a sharp focus on what STEM education professionals and leaders need to know about



The programme will benefit

- School STEM coordinators and STEM teachers
- STEM graduates
- STEM education practitioners from different sectors
- Other STEM professionals



.....with the full support of a strong teaching and technical team, specializing in

- STEM Education
- Sciences
- Information and Communication Technology
- Mathematics
- Engineering
- Environmental Studies
- Creativity Education

The programme offers **6+2 courses**, covering major STEM education themes.

6 core courses:

- STEM education: theoretical and curricular perspectives (3 cps)
- Scientific inquiry and engineering design (3 cps)
- Technology in STEM education (3 cps)
- Developing creativity and innovation in STEM (3 cps)
- Coding and computational thinking (3 cps)
- Principles and methods in STEM education research (3 cps)

Any aspect of the course (including, without limitation, the content of the Course and the manner in which the Course is taught) may be subject to change at any time at the sole discretion of the University. Without limiting the right of the University to amend the course, it is envisaged that changes may be required due to factors such as staffing, enrolment levels, logistical arrangements and curriculum changes.

2 elective courses:

Participants could choose ONE out of the TWO courses in each Elective Group:

Elective Group I (3 cps):

- Curriculum, teaching and assessment in STEM for primary schools

OR

- Curriculum, teaching and assessment in STEM for secondary schools

Elective Group II (3 cps):

- Research project

OR

- Internship

.....delivered through creative and diverse learning modes:

Blended learning using e-platforms



Laboratory experimentation

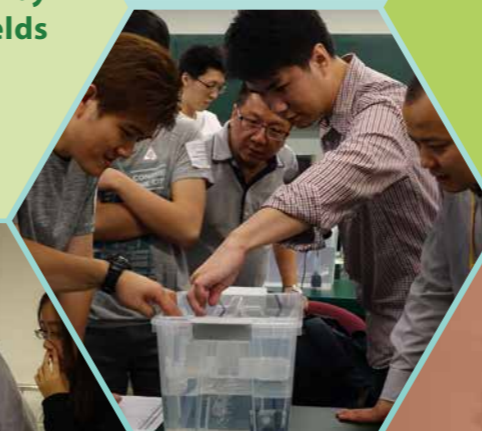
School-based support
Case studies and lesson analysis



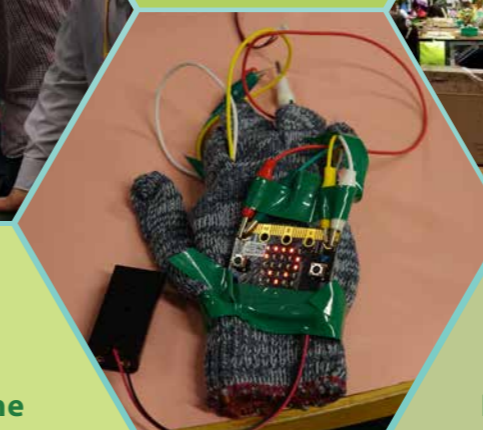
Talks and seminars by experts in STEM fields



Workshops on the use of technological tools



Lectures and group discussion



Research projects to inform school practice



Visits to local and overseas STEM schools and organizations

Medium of Instructions

The medium of instruction is English.

Tuition Fee

Tuition fee for the whole programme is \$120,000 (\$5,000 per cp)*

*Tuition fee is subject to adjustment

Scholarship

Successful applicants may be granted a scholarship of HK\$10,000 by The Education University of Hong Kong. The Education Bureau also offers a scholarship of HK80,000 to local school teachers on a competitive basis. Please refer to the Education Bureau's website for the Scholarship for Teachers (Pursuit of Master's Degree Programmes).

Entrance Requirements

- Applicants should normally hold a recognized Bachelor's degree or equivalent.
 - An applicant whose entrance qualification is obtained from an institution in a non-English speaking country should normally fulfill one of the following minimum English proficiency requirements:
 - IELTS 6.0; or
 - Grade C or above in GCSE/GCE OL English; or
 - a TOEFL score of 550 (paper-based test) or 80 (internet-based test); or
 - Band 6 in the Chinese Mainland's College English Test (CET) (a total score of no lower than 430 if the test was taken after June 2005); or
 - Other equivalent qualifications.
- Shortlisted applicants may be required to attend an interview.

Application

For programme information and application, please visit:

www.eduhk.hk/mastem



.....Join the programme by applying now.