



香港教育大學

The Education University  
of Hong Kong

# 2ND MAJORS & MINORS 2021 /22

Sprache  
ランゲージ  
Language  
語文 언어  
Langue



#Cultivate and Harvest



FACULTY OF  
HUMANITIES

學人  
院文

人脈弘道 Humanity can broaden the Way

# C ontents

- 02      **Second Majors**
- 04      **Minors**
- 12      **General Education**
- 15      **Free Elective Courses**
- 17      **Enquiries**



# Second Majors & Minors

A Second Major or a Minor in the humanities helps broaden and enrich your study in various aspects of human culture, including languages, literatures, cultures, religions and language education. The courses and programmes in the humanities provide you with the knowledge, intellectual skills and habits of thought indispensable to modern education.

There may be some restrictions on the choices of Second Majors/Minors for some programmes. Please read carefully the requirements of the Second Majors/Minors and consult the offering departments/programmes before you make the choices.

Second Majors/Minors will not lead to a Qualified Teacher Status. Teaching practice or immersion/internship will not be arranged for students of Second Majors/Minors.

All courses carry 3 credit points (CPs) each.

## Second Majors

Chinese Language 中國語文

English Language 英國語文

## Minors

Chinese Language 中國語文

Chinese Religions and Culture 中國宗教與文化

English Language 英國語文

English Language Teaching (Primary) 英語教育 (小學)

English Language Teaching (Secondary) 英語教育 (中學)

Film and Popular Culture 電影與流行文化

French Studies 法語

Japanese Studies 日語

Language and Society 語言與社會

Studies on Chinese Language Curriculum 中國語文課程研究

Teaching Chinese as an International Language 國際漢語教學

Translation 翻譯

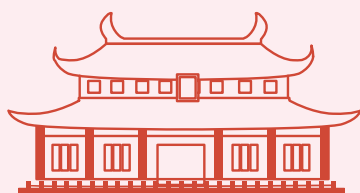
# Second Majors

Students of 4-/5-year full-time undergraduate degree programmes may be permitted to enroll in a Second Major, subject to

- Programme specific requirements; and
- GPA requirement of normally 3.00 or above in the first year of study.

The minimum credit requirement for the Second Majors offered by FHM is 36.

## Chinese Language 中國語文



Students who take Chinese Language as a Second Major will be able to demonstrate a sound understanding of the Chinese Language and advance their knowledge in the disciplines of linguistics, literature and culture.

Pre-requisite Requirements and Other Conditions for Declaring a Second Major:

- Level 3 or above in Chinese Language in HKDSE, or equivalent;
- Year 1 GPA: 3.00 or above; and
- Applicants may be invited for an interview.

Domain	Course Code	Course Title	Dept
Core	CHI1559	現代漢語	CHL
	CHI3714	古代漢語	CHL
	CUS1002	中國文化概說	LCS
	CUS4019	中國思想：原典選讀	LCS
	LIT1001	文學概論	LCS
	LIT2006	中國古代文學（一）（先秦－隋唐）	LCS
	LIT2007	中國古代文學（二）（宋－清）	LCS
	LIT2008	中國現代文學	LCS
Electives (choose any 4 courses)	CHI2450	語言傳播的理論與應用	LML
	CHI2571	媒體寫作	LCS
	CHI3452	篇章語言分析	LML
	CHI3565	漢語修辭學	LML
	CHI3575	漢字學	CHL
	CHI3712	粵語與香港本土文化	CHL
	CHI4577	漢語音韻學	CHL
	CHI4585	中國傳統語言學專書研讀 (先修科目：CHI3714)	CHL
	CUS1001	中國傳統人生哲學	LCS
	LIT1002	兒童文學	LCS
	LIT2003	文學創作	LCS
	LIT3013	專家詩	LCS
	LIT3014	香港文學	LCS
	LIT3015	明清小說	LCS
	LIT4020	中國文學批評	LCS
	LIT4023	莊子	LCS
	LIT4024	詩經楚辭	LCS
	LIT4025	中國文學與其他藝術	LCS

# English Language

## 英國語文

Students who take English Language as Second Major will have in-depth knowledge of English as a language; advance their knowledge in the disciplines of linguistics, literature and applied English studies, in areas such as Phonetics and Phonology, Lexis, Morphology and Semantics, Grammar, Written and Spoken Discourse, Literature and Language Arts, Psycholinguistics, and Sociolinguistics.

Pre-requisite Requirements and Other Conditions for Declaring a Second Major:

- IELTS 6.5 or above (with no paper below 6.0);
- Year 1 GPA: 3.00 or above; and
- Applicants may be invited for an interview.

(Note: Students getting an average of Grade B or above in Year 1 mandatory English Enhancement courses will be considered more favorably.)

Domain	Course Code	Course Title	Dept
Core	ENG1249 <sup>&lt;</sup>	English Grammar for Teachers I	LML
	ENG1324	Introduction to Linguistics	LML
	ENG1326	Introduction to English Phonetics and Phonology	LML
	ENG2246	Introduction to Sociolinguistics	LML
	ENG2347	Words and Their Meanings	LML
	ENG3340	Spoken and Written Discourse	LML
	ENG4419	Second Language Acquisition and Curriculum Design: Theory and Practice	ELE
	LIT1040	Approaching English Literature	LCS
Electives (choose any 4 courses)	CUS3014	Introduction to Film Studies	LCS
	CUS3015	Approaching Popular Media	LCS
	ENG2250 <sup>Δ</sup>	English Grammar for Teachers II	LML
	ENG2336	Intercultural Communication	LML
	ENG3266	Classroom Discourse Analysis	ELE
	ENG3267	Language and Gender	LML
	ENG3281	Integrating Information Technology in the ESL Classroom	ELE
	ENG3323	Teaching Grammar & Vocabulary	ELE
	ENG3346	English as a Global Language	LML
	ENG3399	Teaching Pronunciation (pre-requisite: ENG1326)	ELE
	ENG3400	Advanced Phonology (pre-requisite: ENG1326)	LML
	ENG3416	Written Genres and the Genre Approach to ELT	ELE
	ENG4269	Comparative Language Studies	LML
	ENG4280	Language Assessment	ELE
	ENG4283	Drama in the ESL Classroom (pre-requisite: LIT3049)	ELE
	ENG4292	Pragmatics	LML
	ENG4413	Teaching English Literature	ELE
	ENG4417	Motivation to Learn English: Theories and Practice	ELE
	ENG5236	ELT Methodology: Innovation and Change	ELE
	LIN3021	Language, Brain and the Mind	LML
	LIT2048	Literature in Context I: 1789 - 1914	LCS
	LIT3046	Creative Writing	LCS
	LIT3047	Literatures in English: Poetry	LCS
	LIT3049	Drama Performance and Playwriting	LCS
	LIT3050	Readings in New Literatures in English	LCS
	LIT3051	Children's and Adolescent Literature	LCS
	LIT3052	Literature in Context II: 1914 - 2000	LCS
	LIT4053	Traditions of English Literature: Britain & Ireland (pre-requisite: LIT1040 or LIT2048)	LCS
	LIT4054	Shakespeare	LCS
	LIT4055	Postcolonial Literatures in English	LCS

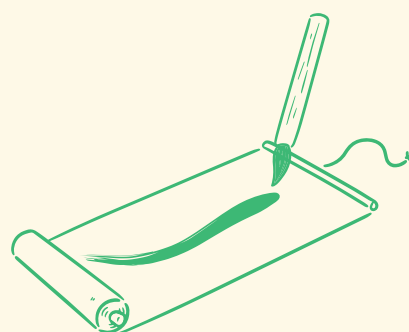
<sup><</sup> The title of this course is very similar to another course, ENG2325 English Grammar I, which cannot be used to form Second Major/Minor in English Language. Please check the course code carefully during course registration.

<sup>Δ</sup> The title of this course is very similar to another course, ENG3329 English Grammar II, which cannot be used to form Second Major/Minor in English Language. Please check the course code carefully during course registration.

# Minors

Students of full-time undergraduate degree programmes (except those with programme/curriculum restriction) have the option of taking a Minor of 15 cps (or two Minors) of taught courses in the Core and Elective Domains for graduation with Minor(s), subject to specific requirements of the Minor(s).

## Chinese Language 中國語文



The Minor enables students to explore Chinese language and its cultures through various linguistics, literature and culture courses offered. Those who graduate with Chinese Language as a Minor will be able to demonstrate a basic knowledge about how the Chinese language can be analysed and about how it is used to communicate in social, cultural and/or professional contexts.

Domain	Course Code	Course Title	Dept
Core (choose any 4 courses)	CHI1559	現代漢語	CHL
	CHI2450	語言傳播的理論與應用	LML
	CHI3565	漢語修辭學	LML
	CHI3714	古代漢語	CHL
	CUS1001	中國傳統人生哲學	LCS
	LIT1001	文學概論	LCS
	LIT1002	兒童文學	LCS
	LIT2003	文學創作	LCS
	LIT2006	中國古代文學（一）（先秦－隋唐）	LCS
	LIT2007	中國古代文學（二）（宋－清）	LCS
	LIT2008	中國現代文學	LCS
Electives (choose any 1 course)	CHI3575	漢字學	CHL
	CHI4577	漢語音韻學	CHL
	LIT3013	專家詩	LCS
	LIT3014	香港文學	LCS
	LIT4020	中國文學批評	LCS

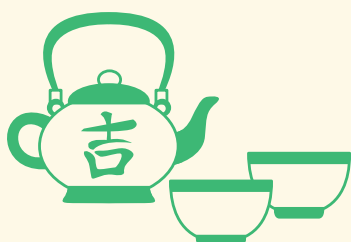




## Chinese Religions and Culture 中國宗教與文化

This Minor aims to deepen students' understanding of popular religious beliefs and customs in Chinese culture. By studying the major religions in China, their impact on ancient and modern Chinese cultural history, and the cultural collision and religious transformation after the spread of Western religions in China, students will grasp the way religions and culture influence the life of Chinese, and gain a more comprehensive understanding of Chinese traditional culture.

Domain	Course Code	Course Title	Dept
Electives (choose any 5 courses)	CUS1001	中國傳統人生哲學	LCS
	CUS1003	宗教傳播與社會變遷	
	CUS2005	西方宗教與中國文化	
	CUS3007	儒道文化互動	
	CUS3008	佛教在香港	
	CUS4009	中西神話的文化想像	
	CUS4019	中國思想：原典選讀	
	LIT5030	周易	



# English Language

## 英國語文

The Minor gives students opportunities to explore the English language and also to acquaint themselves with some of its associated cultures through the various linguistics and literature courses offered. Those who graduate with English Language as a Minor will be able to demonstrate a basic knowledge about how the English language can be analysed and about how it is used to communicate in social, cultural and/or professional contexts.

Domain	Course Code	Course Title	Dept
Electives (choose any 5 courses)	CUS3014	Introduction to Film Studies	LCS
	CUS3015	Approaching Popular Media	LCS
	ENG1249<	English Grammar for Teachers I	LML
	ENG1324	Introduction to Linguistics	LML
	ENG1326	Introduction to English Phonetics and Phonology	LML
	ENG2246	Introduction to Sociolinguistics	LML
	ENG2250 <sup>Δ</sup>	English Grammar for Teachers II	LML
	ENG2336	Intercultural Communication	LML
	ENG2347	Words and Their Meanings	LML
	ENG3266	Classroom Discourse Analysis	ELE
	ENG3267	Language and Gender	LML
	ENG3281	Integrating Information Technology in the ESL Classroom	ELE
	ENG3323	Teaching Grammar & Vocabulary	ELE
	ENG3340	Spoken and Written Discourse	LML
	ENG3346	English as a Global Language	LML
	ENG3399	Teaching Pronunciation (pre-requisite: ENG1326)	ELE
	ENG3400	Advanced Phonology (pre-requisite: ENG1326)	LML
	ENG3416	Written Genres and the Genre Approach to ELT	ELE
	ENG4269	Comparative Language Studies	LML
	ENG4280	Language Assessment	ELE
	ENG4283	Drama in the ESL Classroom (pre-requisite: LIT3049)	ELE
	ENG4292	Pragmatics	LML
	ENG4413	Teaching English Literature	ELE
	ENG4417	Motivation to Learn English: Theories and Practice	ELE
	ENG4419	Second Language Acquisition and Curriculum Design: Theory and Practice	ELE
	ENG5236	ELT Methodology: Innovation and Change	ELE
	LIN3021	Language, Brain and the Mind	LML
	LIT1040	Approaching English Literature	LCS
	LIT2048	Literature in Context I: 1789 - 1914	LCS
	LIT3046	Creative Writing	LCS
	LIT3047	Literatures in English: Poetry	LCS
	LIT3049	Drama Performance and Playwriting	LCS
	LIT3050	Readings in New Literatures in English	LCS
	LIT3051	Children's and Adolescent Literature	LCS
	LIT3052	Literature in Context II: 1914 - 2000	LCS
	LIT4053	Traditions of English Literature: Britain & Ireland (pre-requisite: LIT1040 or LIT2048)	LCS
	LIT4054	Shakespeare	LCS
	LIT4055	Postcolonial Literatures in English	LCS

< The title of this course is very similar to another course, ENG2325 English Grammar I, which cannot be used to form Second Major/Minor in English Language. Please check the course code carefully during course registration.

Δ The title of this course is very similar to another course, ENG3329 English Grammar II, which cannot be used to form Second Major/Minor in English Language. Please check the course code carefully during course registration.



# English Language Teaching (Primary/Secondary)

## 英語教育（小學 / 中學）



These Minors focus on the teaching of the English language in primary schools (Primary Strand)/secondary schools (Secondary Strand) and the practical issues and strategies involved. They enable students to have an understanding of how English is taught and help learners develop meta-knowledge and meta-cognition of the second language learning processes and strategies, which can be useful to their own English language learning.

These Minors are only offered to undergraduate students in their 3rd year of study or beyond. The exit requirement of these Minors is IELTS 6.5 (with no sub-score lower than 6.0) or equivalent.

### Primary Strand

Domain	Course Code	Course Title	Dept
Core	ENG2256	Primary ELT Methods I	ELE
	ENG3261	Primary ELT Methods II	
	ENG4419 <sup>Ω</sup>	Second Language Acquisition and Curriculum Design: Theory and Practice	
Electives (choose any 2 courses)	ENG2402	Children's Literature in the ESL/EFL Classroom	ELE
	ENG3281	Integrating Information Technology in the ESL Classroom	
	ENG3323	Teaching Grammar and Vocabulary	
	ENG3399	Teaching Pronunciation (pre-requisite: ENG1326)	
	ENG3416	Written Genres and the Genre Approach to ELT	
	ENG4280	Language Assessment	
	ENG4283 <sup>#</sup>	Drama in the ESL Classroom (pre-requisite: ENG2333, ENG3274 and LIT3049)	
	ENG4285	Content-based Language Teaching (pre-requisite: ENG3261 or ENG3262)	
	ENG4342	Theories of Language Learning: Cognition and Context	

### Secondary Strand

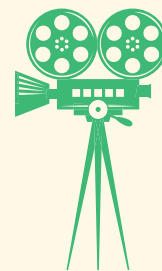
Domain	Course Code	Course Title	Dept
Core	ENG2257	Secondary ELT Methods I	ELE
	ENG3262	Secondary ELT Methods II	
	ENG4419 <sup>Ω</sup>	Second Language Acquisition and Curriculum Design: Theory and Practice	
Electives (choose any 2 courses)	ENG2403	Using Language Arts and Non-language Arts in the ESL/EFL Classroom	ELE
	ENG3281	Integrating Information Technology in the ESL Classroom	
	ENG3323	Teaching Grammar and Vocabulary	
	ENG3399	Teaching Pronunciation (pre-requisite: ENG1326)	
	ENG3416	Written Genres and the Genre Approach to ELT	
	ENG4280	Language Assessment	
	ENG4283 <sup>#</sup>	Drama in the ESL Classroom (pre-requisite: ENG2333, ENG3274 and LIT3049)	
	ENG4285	Content-based Language Teaching (pre-requisite: ENG3261 or ENG3262)	
	ENG4342	Theories of Language Learning: Cognition and Context	

<sup>Ω</sup> ENG4419 is a Common Core for the two strands. Based on the policy that no double counting is permitted, students wishing to take Double Minors in both strands are required to take a total of 5 elective courses from the lists, in addition to the required Core courses (ie a total of 5 Core courses from both strands) to make up a total of 10 courses.

<sup>#</sup> Students who have not taken the pre-requisite course yet should submit their applications for exemption to the course lecturer directly by email. After getting the approval, students have to contact their programme office to register the course manually.

# Film and Popular Culture

## 電影與流行文化

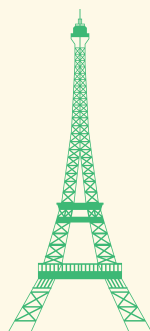


Entertainment media, including film and popular culture, can have a profound impact on individual knowledge and behaviour and on society. Filmmakers and popular culture exponents play an increasingly vital role in shaping public opinion and transforming society. This Minor aims to equip students with the skills to identify and analyse key issues in the study of film and popular culture, guiding them to acquire a global and critical sensibility.

Domain	Course Code	Course Title	Dept
Electives (choose any 5 courses)	CUS2004	中國電影：創作、風格和接受	LCS
	CUS2012	English Language Popular Culture	
	CUS3014 or CUS3016	Introduction to Film Studies or Studying Films in Context	
	CUS3015	Approaching Popular Media	
	CUS3017	Gender and Popular Culture	
	CUS3019	電視劇：文本、觀眾與身份認同	
	HIS3038	近代中國文化史：電影、流行文化和政治	
	LIT4056	Literature and Film	

# French Studies

## 法語



In line with the University's twin goals of internationalisation and developing students' global awareness, the Minor in the French Studies programme is primarily designed to enrich our students' major studies by content learning (ie French art, culture, education, and/or history) at the University or during their exchange semester(s) in a French university. The second objective of this Minor programme is to equip our students with a level of French competence equivalent to Level A2 or B1 with regard to the Common European Framework of Reference (CEFR).

Domain	Course Code	Course Title	Dept
Core	LIN1014	French I	LML
	LIN1017	French II	
	LIN1024	French III	
	LIN3025	French IV	
Electives (choose any 1 course)	HIS2036	History of Modern France	LCS
	LIN3029	French Language and Culture	LML

# Japanese Studies

日語

にほんご

In line with the University's twin goals of internationalisation and developing students' global awareness, the Minor in Japanese Studies programme is primarily designed to enrich our students' major studies by content learning (eg Japanese culture, history and current affairs) at the University or during their exchange semester(s) in a Japanese university. The second objective of this Minor programme is to equip our students with intermediate competence in the Japanese language, which allows students to use Japanese in everyday situations.

Domain	Course Code	Course Title	Dept
Core	LIN1012 <sup>∞</sup>	Japanese I	LML
	LIN1013	Japanese II	
	LIN2034	Japanese III	
	LIN3037	Japanese IV	
Electives (choose any 1 course)	HIS3010	Modern Japan and its Neighbors since the mid-19th Century	LCS
	LIN3032	Japanese Language and Culture	LML

<sup>∞</sup> Students who have basic Japanese proficiency have the option of taking an additional elective from the list to replace Japanese I. Students' proficiency will be assessed before approval.

# Language and Society

語言與社會

This Minor is only offered to students who are NON-English-Majors.

The Minor programme aims to develop students' knowledge in subject areas that examine the use of language in a variety of social contexts. It aims to enhance students' awareness and sensitivity to the social meanings of context-specific language use in Chinese, English, and bilingual interaction. This Minor

is only offered to students who are non-English-majors. The knowledge and skills students gained in this Minor programme will equip them with a critical and analytical mind to understand the dynamics of social interaction in monolingual mode and in bilingual settings, from everyday conversations to field-specific discourse between teachers and educators, as well as between professionals in the workplace.

## For all students except BA(Lang Studies) - Chinese Major students

Domain	Course Code	Course Title	Dept
Core	ENG1324	Introduction to Linguistics	LML
	ENG2246	Introduction to Sociolinguistics	
Electives (choose any 3 courses)	CHI2450 or CHI3452	語言傳播的理論與應用 or 篇章語言分析	LML
	ENG3267	Language and Gender	
	ENG3340	Spoken and Written Discourse	
	ENG3344 or LIN3016	Chinese-English Contrastive Grammar or Contrastive Analysis of Languages and Translation	
	ENG3346 or ENG4343	English as a Global Language or Asian Englishes and English as a Lingua Franca in Asia	
	ENG4292	Pragmatics	
	LIN1012 or LIN1013 or LIN1014 or LIN1017 or LIN1018 or LIN1024 or LIN1030 or LIN1033 or LIN2034 or LIN2035 or LIN3029 or LIN3032 or LIN3036	Japanese I or Japanese II or French I or French II or Korean I or French III or German I or Korean II or Japanese III or Korean III or French Language and Culture or Japanese Language and Culture or Korean Language and Culture	
	LIN3015	Introduction to Translation	

## For BA(Lang Studies) - Chinese Major students

Domain	Course Code	Course Title	Dept
Core	ENG2246	Introduction to Sociolinguistics	LML
Electives (choose any 4 courses)	CHI2450 or CHI3452	語言傳播的理論與應用 or 篇章語言分析	LML
	ENG3267	Language and Gender	
	ENG3340	Spoken and Written Discourse	
	ENG3344 or LIN3016	Chinese-English Contrastive Grammar or Contrastive Analysis of Languages and Translation	
	ENG3346 or ENG4343	English as a Global Language or Asian Englishes and English as a Lingua Franca in Asia	
	ENG4292	Pragmatics	
	LIN1012 or LIN1013 or LIN1014 or LIN1017 or LIN1018 or LIN1024 or LIN1030 or LIN1033 or LIN2034 or LIN2035 or LIN3029 or LIN3032 or LIN3036	Japanese I or Japanese II or French I or French II or Korean I or French III or German I or Korean II or Japanese III or Korean III or French Language and Culture or Japanese Language and Culture or Korean Language and Culture	

## Studies on Chinese Language Curriculum 中國語文課程研究

This Minor aims to provide students with insights into Chinese language curriculum and instruction, and thus to foster students' ability to discover the pedagogical content knowledge required for effective Chinese teaching creatively and independently.

Domain	Course Code	Course Title	Dept
Electives (choose any 5 courses)	CHI3436 <sup>^</sup>	校本語文課程與教材發展	CHL
	CHI3614	中國語文教學心理學	
	CHI3617 <sup>^</sup>	課堂語言的理論與實踐	
	CHI3676	語文教學專題研究	
	CHI3677	各體文教學	
	CHI3678	童書教學	
	CHI3679	語文評估	
	CHI3913	中國民俗故事與語文教學	
	CHI3914	影視與中國語文教學	

<sup>^</sup> CHI3436 and CHI3617, the Major Cores of BEd(CL) (Programme Code: A5B060), are only applicable for non-BEd(CL) students.

# Teaching Chinese as an International Language

## 國際漢語教學

This Minor aims to broaden students' understanding of teaching Chinese to non-native Chinese speakers (either in Cantonese or Putonghua). Students taking this Minor will acquire professional competence and knowledge of teaching Chinese as an international language in the local and global contexts, including local and international schools in Hong Kong.

Domain	Course Code	Course Title	Dept
Electives (choose any 5 courses)	CHI3613	普通話與中國語文教學	CHL
	CHI3672	國際漢語課程與教材設計	
	CHI3673	國際漢語教學與評估	
	CHI3674	國際漢語教學話語分析	
	CHI3675	粵普對比分析	
	CHI4615	中國語文課程（非華語學生）單元教學設計及開發	
	CHI4671	國際漢語學習與習得	

# Translation

## 翻譯

This Minor is designed to develop students' Chinese and English translation skills, strengthen their Chinese and English language proficiency, enhance their cultural awareness and train them to become bilingual communicators. It also aims to widen students' interdisciplinary horizons and broaden their career options.

Domain	Course Code	Course Title	Dept
Core	LIN3015*	Introduction to Translation	LML
	LIN3016	Contrastive Analysis of Languages and Translation	
	LIN3023	Practical Translation	
Electives (choose any 2 courses)	CHI2450	Language Communication: Theory and Practice	LML
	CHI3452	篇章語言分析	
	CHI3565▣	Chinese Rhetoric	
	ENG2325 <sup>v</sup>	English Grammar I	
	ENG2336 <sup>♦</sup>	Intercultural Communication	
	ENG3329 <sup>v</sup>	English Grammar II	
	ENG3344 <sup>■</sup>	Chinese-English Contrastive Grammar	
	ENG4269 <sup>■</sup>	Comparative Language Studies	
	LIN3031	Culture and Translation	
	LIT3011	Chinese Literature in English Translation	LCS
	LIT4021 <sup>•</sup>	Comparative Study of Chinese and Western Literature	

The courses that the following notes refer to are Major (Core)/Common Core courses for the programmes concerned and thus are not applicable for obtaining the Minor.

\* Not applicable for both Chinese and English Majors of BA(Lang Studies) students [2015-19 cohort and onwards]. Students concerned are required to take 1 more elective (total 3 electives) as substitution.

▣ Not applicable for BA(Lang Studies) Chinese Major and BEd(CL) students.

<sup>v</sup> Not applicable for BA(Lang Studies) English Major students.

<sup>♦</sup> Not applicable for both Chinese and English Majors of BA(Lang Studies) and BA(TCSL) students.

<sup>■</sup> Not applicable for both Chinese and English Majors of BA(Lang Studies) students [2014-18 cohort and before] and BA(TCSL) students. For students in both Chinese and English Majors of BA(Lang Studies) [2015-19 cohort and onwards] and other programmes, they could choose either ENG3344 or ENG4269 as elective.

<sup>•</sup> Not applicable for both Chinese and English Majors of BA(Lang Studies) students.



# General Education

General Education (GE) aims to broaden students' intellectual horizons, help them make connections among different areas of knowledge between their formal studies and life outside the classroom, and strengthen their capacity for critical thinking and judgement. GE offers a varied but balanced mix of individual courses across a range to subject areas and disciplines.

Under the new curriculum that starts from 2019/20, the GE structure has been revamped into 4 core components:

- General Education Foundation Course  
(Please visit General Education Office for details)
- General Education Breadth Courses
- Experiential Learning
- University ePortfolio



## General Education Breadth Courses

The General Education Breadth Courses (GEBCs) are composed of three components, namely General Education Breadth Learning Strands (GELS), Positive and Values Education (PAVE) Courses and General Education Interdisciplinary Courses (GEICs). Students have to take one of each component for fulfilling the GEBCs requirement (9 cps).

Component	Course Code	Course Title	Dept
GELS	GEF1019	Travellers and Other Cultures: Literature and History	LCS
	GEF1020	從兒童文學看個人成長	LCS
	GEF1023	仙凡之戀－愛情與文學	CHL
	GEG1039	古代中印文化交流史	CHL
	GEG1040	Hong Kong Popular Culture	LCS
	GEG1055	中國書法	CHL
	GEG1056	語言與文化	CHL
	GEG1060	Korean Popular Culture in Hong Kong	LCS
	GEG2058	現代中國的災難與回憶	LCS
	GEH1002	Critical Thinking for Everyday Life: Exploring the Evidence	ELE
	GEH1029	Language and Cognition	LML
PAVE	GEK1014	正向人生與道家、道教	CHL
	GEK1027	Multiculturalism and International Mindedness	CHL
	GEK2012	Writing Your Life	ELE
	GEK2020	Positive Communication in Educational Settings	ELE
	GEK2022	Perspectives on Difference: Promoting Social Awareness and Positivity	LCS
	GEK2031	Positive Intercultural Communication in Everyday Life	CHL
GEICs	GEI4003	Ideals and Reality: Urban Environments	ELE
	GEI4005	Biographical Films: Arts, Societies and Human Development	LCS



## Experiential Learning

Experiential Learning (EL) is composed of a 3-cp Co-curricular and Service Learning Course (CSLCs) and a 3-cp Experiential Learning Course (ELCs). Students are required to take one course from each component.

Component	Course Code	Course Title	Dept
CSLCs	CSL1015/GEM1029	Understanding Linguistic and Related Barriers through Services to Socially Disadvantaged Children	LML
	CSL1034/GEM1030	Transforming Children through Reading Stories in English	ELE
	CSL1035/GEM1038	語文嘉年華	CHL
	CSL1037/GEM1039	創意戲劇策略與語文教室	CHL
	CSL2033/GEM2023	中文報道及口述歷史寫作	LCS
ELCs	GEL1001	Exploring Hong Kong's Rural Heritage and Nature (for 2018/19 cohort and onwards only)	ELE
	GEL2009	The Global and the Local in Contemporary Hong Kong (for 2019/20 cohort and onwards only)	LCS

The courses with a course code starting with "CSL" are offered to students of 2018/19 cohort and before, while the courses with a course code starting with "GEM" are offered to students of 2019/20 cohort and onwards.

## University ePortfolio

University ePortfolio (UePortfolio) is introduced to replace the General Education Consolidation Courses (GECC). Students are required to take one course (3 cps) as "capstone" course.

Component	Course Code	Course Title	Dept
UePortfolio	GEJ4021	The Language We Live By	CHL
	GEJ4024	Towards a Critical Approach to English Language Teaching	ELE
	GEJ4025	Building your UePortfolio on Multilingual Self and Society	LML
	GEJ4026	Culture and Contemporary Life	LCS

# Free Elective Courses

On top of the Major courses, free electives provide greater flexibility and multiple learning pathways for students to develop their interests and explore their career aspirations. Each course carries 3 cps.

Course Code	Course Title	Dept
CHI1559	現代漢語	CHL
CHI1666	現代漢語通論	CHL
CHI2571	媒體寫作	LCS
CHI3436	校本語文課程與教材發展	CHL
CHI3565	漢語修辭學	LML
CHI3573	漢語語言學專題	CHL
CHI3575	漢字學	CHL
CHI3613	普通話與中國語文教學	CHL
CHI3614	中國語文教學心理學	CHL
CHI3617	課堂語言的理論與實踐	CHL
CHI3672	國際漢語課程與教材設計	CHL
CHI3673	國際漢語教學與評估	CHL
CHI3674	國際漢語教學話語分析	CHL
CHI3675	粵普對比分析	CHL
CHI3676	語文教學專題研究	CHL
CHI3677	各體文教學	CHL
CHI3678	童書教學	CHL
CHI3679	語文評估	CHL
CHI3712	粵語與香港本土文化	CHL
CHI3713	普通話語音研習及理論應用	CHL
CHI3714	古代漢語	CHL
CHI3725	語文教學與資訊科技素養	CHL
CHI3741	朗誦與語文教學	CHL
CHI3913	中國民俗故事與語文教學	CHL
CHI3914	影視與中國語文教學	CHL
CHI4577	漢語音韻學	CHL
CHI4585	中國傳統語言學專書研讀	CHL
CHI4615	中國語文課程 (非華語學生) 單元教學設計及開發	CHL
CHI4671	國際漢語學習與習得	CHL
CUS1001	中國傳統人生哲學	LCS
CUS2005	西方宗教與中國文化	LCS
CUS3008	佛教在香港	LCS
CUS3014	Introduction to Film Studies	LCS
CUS3015	Approaching Popular Media	LCS
CUS3016	Studying Films in Context	LCS
CUS3017	Gender and Popular Culture	LCS
CUS4009	中西神話的文化想像	LCS
CUS4019	中國思想：原典選讀	LCS
ENG1249	English Grammar for Teachers I	LML
ENG1324	Introduction to Linguistics	LML
ENG1326	Introduction to English Phonetics and Phonology	LML
ENG2246	Introduction to Sociolinguistics	LML
ENG2250	English Grammar for Teachers II	LML
ENG2325	English Grammar I	LML
ENG2336	Intercultural Communication	LML
ENG2347	Words and Their Meanings	LML
ENG3267	Language and Gender	LML
ENG3329	English Grammar II	LML
ENG3340	Spoken and Written Discourse	LML
ENG3344	Chinese-English Contrastive Grammar	LML
ENG3346	English as a Global Language	LML
ENG3400	Advanced Phonology	LML
ENG4292	Pragmatics	LML

Course Code	Course Title	Dept
HIS1022	中國歷史研究法：史料、方法與田野考察	LCS
HIS1043	Modern Hong Kong: From Opium War to Basic Law	LCS
HIS2008	China: Reform and Revolution from Late Qing to 1949	LCS
HIS2036	History of Modern France	LCS
HIS2040	中國歷史（一）：先秦至漢代	LCS
HIS2041	中國歷史（二）：魏晉南北朝至五代	LCS
HIS3009	Revolution and Modernity: History of the PRC	LCS
HIS3010	Modern Japan and its Neighbors since the mid-19th Century	LCS
HIS3030	中國宗教與社會史	LCS
HIS3038	近代中國文化史：電影、流行文化和政治	LCS
HIS3047	中國歷史地理	LCS
HIS3053	臺灣歷史：傳統與現代的連結	LCS
HIS4014	International Cooperation after World War II	LCS
HIS4015	Historiography	LCS
HIS4027	中國歷史研究新趨勢	LCS
HIS4046	The Cold War	LCS
HIS4048	中國思想史	LCS
LIN1012	Japanese I	LML
LIN1013	Japanese II	LML
LIN1014	French I	LML
LIN1017	French II	LML
LIN1018	Korean I	LML
LIN1024	French III	LML
LIN1033	Korean II	LML
LIN2020	Child Language Development	LML
LIN2034	Japanese III	LML
LIN2035	Korean III	LML
LIN3015	Introduction to Translation	LML
LIN3016	Contrastive Analysis of Language and Translation	LML
LIN3021	Language, Brain, and the Mind	LML
LIN3023	Practical Translation	LML
LIN3031	Culture and Translation	LML
LIN4001	Language and the Human Footprint	LML
TBC <sup>&gt;</sup>	The French-speaking World in Films	LML
TBC <sup>&gt;</sup>	Topics in Japanese-Chinese Translation: Manga and Popular Culture	LML
TBC <sup>&gt;</sup>	Exploring Korean Culture and Society through Multimedia	LML
LIT1001	文學概論	LCS
LIT1002	兒童文學	LCS
LIT1040	Approaching English Literature	LCS
LIT2003	文學創作	LCS
LIT2006	中國古代文學（一）（先秦－隋唐）	LCS
LIT2007	中國古代文學（二）（宋－清）	LCS
LIT2008	中國現代文學	LCS
LIT2043	Literatures in English I: Fiction	LCS
LIT2045	Literatures in English II: Drama	LCS
LIT2048	Literature in Context I: 1789 - 1914	LCS
LIT3009	魯迅小說	LCS
LIT3011	Chinese Literature in English Translation	LCS
LIT3012	戲劇與傳意	LCS
LIT3013	專家詩	LCS
LIT3014	香港文學	LCS
LIT3015	明清小說	LCS
LIT3016	文學經典作品選讀	LCS
LIT3046	Creative Writing	LCS
LIT3047	Literatures in English: Poetry	LCS
LIT3049	Drama Performance and Playwriting	LCS
LIT3050	Readings in New Literatures in English	LCS
LIT3051	Children's and Adolescent Literature	LCS
LIT3052	Literature in Context II: 1914 - 2000	LCS
LIT4020	中國文學批評	LCS
LIT4021	中西文學比較	LCS
LIT4053	Traditions of English Literature: Britain & Ireland	LCS

> Subject to approval.



# Enquiries



	Offering Programme/ Department	Second Major	Minor	Programme/ Departmental Coordinator	Student Enquiry
Chinese Language 中國語文	BEd(CL) Programme	√	√	Dr HO Chi Hang 2948 7350 chho@eduhk.hk	Ms Doris CHAN 2948 7964 a5b060@eduhk.hk
Chinese Religions and Culture 中國宗教與文化	LCS	-	√	Dr FUNG Shu Fun 2948 7191 sffung@eduhk.hk	Ms Sandy CHAN 2948 6180 yeeman@eduhk.hk
English Language 英國語文	BEd(EL) Programme	√	√	Ms CHAN Ka Yin Clairine 2948 7392 cky@eduhk.hk	Ms Wah WU 2948 7215 a5b059@eduhk.hk
English Language Teaching (Primary) 英語教育 (小學)	ELE	-	√	Ms CHAN Ka Yin Clairine 2948 7392 cky@eduhk.hk	Ms Wenifa LAM 2948 7269 wsklam@eduhk.hk
English Language Teaching (Secondary) 英語教育 (中學)			√		
Film and Popular Culture 電影與流行文化	LCS	-	√	Dr BANERJEE Bidisha 2948 6010 banerjee@eduhk.hk	Ms Sandy CHAN 2948 6180 yeeman@eduhk.hk
French Studies 法語	LML	-	√	Ms MOULIMOIS Alice 2948 7254 moulimois@eduhk.hk	Ms Teresa YEUNG 2948 7263 tysyeung@eduhk.hk
Japanese Studies 日語			√	Dr LUK Pei Sui Zoe 2948 7570 psluk@eduhk.hk	
Language and Society 語言與社會			√	Dr CHIN Chi On Andy 2948 7780 andychin@eduhk.hk	
Studies on Chinese Language Curriculum 中國語文課程研究	CHL	-	√	Dr HO Chi Hang 2948 7350 chho@eduhk.hk	Ms Carol CHOW 2948 8153 ckaman@eduhk.hk
Teaching Chinese as an International Language 國際漢語教學			√		
Translation 翻譯	LML	-	√	Dr LIU Fung Ming Christy 2948 7887 liufm@eduhk.hk	Ms Teresa YEUNG 2948 7263 tysyeung@eduhk.hk

The information contained herein may be changed for unforeseeable reasons.  
Please refer to Registry's website at [www.eduhk.hk/re](http://www.eduhk.hk/re) for requirements, application procedures and other details.

The information given in this booklet is accurate as of February 2021.  
Please refer to FHM's programme website at [www.eduhk.hk/fhm/en/page/second-major-and-minor](http://www.eduhk.hk/fhm/en/page/second-major-and-minor) for the latest course information.





**FACULTY OF  
HUMANITIES** | 學人  
院文  
*人能弘道 Humanity can broaden the Way*



## Faculty of Humanities

The Education University of Hong Kong

B2-G/F-04, 10 Lo Ping Road, Tai Po

New Territories, Hong Kong



(852) 2948 7237



(852) 2948 6199



fhm@eduhk.hk



[www.eduhk.hk/fhm](http://www.eduhk.hk/fhm)



[www.instagram.com/  
eduhk.fhm](https://www.instagram.com/eduhk.fhm)



[www.facebook.com/  
eduhk.fhm](https://www.facebook.com/eduhk.fhm)