



香港教育大學  
The Education University  
of Hong Kong

研究生

# POSTGRADUATE 課程 PROGRAMMES



CHILD & FAMILY EDUCATION  
EDUCATIONAL COUNSELLING  
EDUCATIONAL LEADERSHIP & INNOVATION

PSYCHOLOGY  
SPEECH THERAPY  
TEACHING & EDUCATION



Faculty of Education  
and Human Development  
教育及人類發展學院

# Doctor of Philosophy/ Master of Philosophy

## Enquiry

✉ [rpg@eduhk.hk](mailto:rpg@eduhk.hk)

🌐 [www.eduhk.hk/fehd](http://www.eduhk.hk/fehd)



### ○ Programme Code

**PhD:** A3D054/A4D056

**MPhil:** A2M053

### ○ Study Mode

**PhD:** Three-to-Four-year Full-time

**MPhil:** Two-year Full-time

### ○ Tuition Fee

HK\$42,100 per annum

(Provisional and subject to adjustment)  
Extension fee will be charged to students who have to extend their studies beyond normal duration.

### ○ Medium of Instruction

English

### Special Features

- ◆ Supervision and teaching by internationally renowned researchers in different specialised areas
- ◆ Research emphasis
- ◆ Focused-resources in education and related disciplines
- ◆ Affiliation to the University-level or Faculty-level research centres, according to student research areas
- ◆ State-of-the-art learning facilities
- ◆ Financial study assistance available

## Participants

---

Talented and enthusiastic individuals interested in research, aspiring academics, or those aiming to become teacher educators.

## Programme Structure

---

The programme comprises core courses and independent research under the guidance of supervisors and academic advisors.

## Curriculum

---

Students pursuing MPhil or PhD studies are first required to register provisionally for the degree and their registration will be confirmed after successfully undertaking a Confirmation of Candidature. The Confirmation of Candidature is expected to be taken after 12 months of study.

The confirmation process provides an opportunity for the students to submit and obtain recommendations on a plan for the structure of their research programmes, describe the investigative programme, and identify the range of expertise necessary to complete the research.

Application for an upgrade from MPhil to PhD will be considered after confirmation of candidature and completion of the coursework requirements.



## Financial Assistance

---

All full-time research students are automatically considered for Research Postgraduate Studentship. The value of the studentship shall be determined by the University when necessary. The monthly stipend for the 2020-21 academic year is HK\$17,600 (approximately US\$2,260) for all MPhil and PhD students and HK\$18,100 (approximately US\$2,320) for post-candidacy PhD students. Conference and research support will also be provided to each student.

## General Admission Requirements

---

### MPhil

A Bachelor's degree (or equivalent qualification) from a recognised university

### PhD

- ◆ A Master's degree (or equivalent qualification) from a recognised university; or
- ◆ A Bachelor's degree with first class honours (or equivalent qualification) from a recognised university

### English Language Requirements\*

Applicants with a Bachelor's or Master's degree at a university where the programme was not taught and assessed in English are required to demonstrate competency through one of the following minimum requirements:

- ◆ IELTS 6.5 with no subtest lower than 6.0; or
- ◆ A TOEFL score of 80 (internet-based test) ; or
- ◆ Other equivalent qualifications<sup>#</sup>

---

\* Individual field of study such as English language may have higher requirements.

<sup>#</sup> The College English Test (CET) is not accepted as an equivalent qualification.

# Doctor of Education

## Enquiry

✉ [edd@eduhk.hk](mailto:edd@eduhk.hk)

🌐 [www.eduhk.hk/fehd](http://www.eduhk.hk/fehd)

### ○ Programme Code

**Full-time:** A3D045

**Part-time:** C4D001

### ○ Study Mode

Three-year Full-time/

Four-year Part-time

### ○ Tuition Fee

HK\$360,000 for the 72-credit point of EdD Programme

(Provisional and subject to adjustment)  
Extension fee will be charged to students who have to extend their studies beyond normal duration.

### ○ Medium of Instruction

English

## Special Features

- ◆ Renowned academics experienced in local and international contexts
- ◆ An extensive range of specialised areas
- ◆ Dual emphasis on coursework and research
- ◆ Exposure to international perspectives in educational research, pedagogy and practices
- ◆ Networking opportunities
- ◆ Classes held on weekday evenings and Saturdays and times suited to working professionals
- ◆ Rewards for quality research output available under the Postgraduate Students Publication Award Scheme

## Participants

Experienced educators and professionals in education settings who aspire to extend their expertise in a particular range of educational contexts.

## Programme Structure

	Credits
Taught Core Courses	
◆ Conceptualising Research	9
◆ Research Methods I	
◆ Research Methods II	
2 Specialised Courses	6
2 Elective Courses	6
Seminars for Thesis Writing and Knowledge Transfer	3
Development of Thesis Proposal	6
Thesis	42
<b>Total</b>	<b>72</b>

## Specialised Areas

- ◆ Civic and Citizenship Education
- ◆ International and Comparative Education
- ◆ Curriculum Studies\*
- ◆ Developmental and Educational Psychology\*
- ◆ Early Childhood Education\*
- ◆ Educational Measurement and Assessment  
(Not open for application for 2021/22 intake)
- ◆ Leadership for Future Schools\*
- ◆ Life and Values Education
- ◆ Special Education\*

\* 此專業領域設有中文班，詳情請瀏覽研究生院網頁。



For details of Specialised Areas on offer, please refer to the Graduate School website at [www.eduhk.hk/gradsch/edd](http://www.eduhk.hk/gradsch/edd)

## General Admission Requirements

- ◆ A Master's degree in the discipline of Education or a similar field relevant to their chosen specialised area and possess 4 years professional experience.
- ◆ Applicants are expected to demonstrate a high standard of competence in spoken and written English. Applicants whose entrance qualification is obtained from an institution in a non-English speaking system should normally fulfil one of the following minimum English proficiency requirements:
  - ◇ IELTS 6.5 with no subtest lower than 6.0;
  - ◇ A TOEFL score of 80 (internet-based test) ; or
  - ◇ Other equivalent qualifications<sup>#</sup>.

<sup>#</sup> The College English Test (CET) is not accepted as an equivalent qualification. Please refer to the Graduate School website for the most up-to-date information.



# Master of Education

## Enquiry

✉ [med@eduhk.hk](mailto:med@eduhk.hk)

🌐 [www.eduhk.hk/fehd](http://www.eduhk.hk/fehd)



### ○ Programme Code

Full-time: A1M043

Part-time: C2M001

### ○ Study Mode

One-year Full-time/

Two-year Part-time

### ○ Tuition Fee

HK\$120,000

(Provisional and subject to adjustment)  
Extension fee will be charged to students who have to extend their studies beyond normal duration.

### ○ Medium of Instruction

English and Chinese  
(including Putonghua)

## Special Features

- ◆ Cutting edge curriculum
- ◆ Wide range of Areas of Focus paving the way for career advancement in different professional area
- ◆ Flexible learning routes
- ◆ Renowned and experienced academics in their respective fields
- ◆ Proactive learning approaches
- ◆ Gateway to further study and professional network

## Participants

Educators and professionals with experience in schools and other educational settings seeking academic and professional advancement.

## Areas of Focus

- ◆ Curriculum, Teaching and Assessment
- ◆ Early Childhood Education
- ◆ Educational and Developmental Psychology
- ◆ Educational Leadership
- ◆ Life and Values Education
- ◆ Special Needs, Giftedness and Counselling



For details of Focus on offer, please refer to the Graduate School website at [www.eduhk.hk/gradsch/med](http://www.eduhk.hk/gradsch/med)

## Programme Structure

The Master of Education (MEd) programme comprises 24 credit points. Students are required to take 8 courses (3 cps for each course) to complete the requirements. The Faculty of Education and Human Development offers the specialist route. Students can take a generalist route or a specialist route.

### Specialist Route

This route is designed for students who wish to deepen their professional knowledge in a particular Area of Focus, complemented by elective courses offered in the programme.

2 Core Courses + 3 Specialist Courses within an Area of Focus  
+ Any 3 Specialist Courses/Research Project\*.

\* Students may choose to carry out a research project instead of taking 3 courses in the same Area. The Research project comprises supervised work on an agreed topic with the research project supervisor.

## Core Courses

Core Courses offered by the Faculty of Education and Human Development:

- ◆ Educational Reform and Development in Global Context
- ◆ Introduction to Research Methods




## General Admission Requirements

- ◆ Hold a recognised Bachelor's degree, or equivalent.
- ◆ Applicants whose entrance qualification is obtained from an institution in a non-English speaking system should normally fulfil one of the following minimum English proficiency requirements which may be subject to adjustment:
  - ◇ IELTS 6.0; or
  - ◇ Grade C or above in GCSE/GCE OL English; or
  - ◇ A TOEFL score of 80 (internet-based test); or
  - ◇ Band 6 in the Chinese Mainland's College English Test (CET) (a total score of 430 or above and the test result should be valid within two years); or
  - ◇ Other equivalent qualifications.



# Master of Arts in Child and Family Education

## Enquiry

-  (852) 2948 7897
-  [macfe@eduhk.hk](mailto:macfe@eduhk.hk)
-  [www.eduhk.hk/macfe](http://www.eduhk.hk/macfe)

## ○ Programme Code

**Full-time:** A1M089

**Part-time:** C2M021

## ○ Study Mode

One-year Full-time/

Two-year Part-time

## ○ Tuition Fee

HK\$120,000

(Provisional and subject to adjustment)

## ○ Medium of Instruction

The medium of instruction is English. The fieldwork attachment for the non-thesis option will be conducted in Chinese or English.

## Special Features

- ◆ Emphasises family and parenting practices with the development of children, the understanding of family dynamics in children's outcomes, and the use of education and intervention programmes to strengthen parenting practices for the positive development of children.
- ◆ Run by EdUHK's Department of Early Childhood Education. The department has a prolific scholarly output and quality teams in both child education and family studies.
- ◆ Offers a versatile approach with two elective options (thesis and non-thesis), allowing both research and coursework paths for students of different potentials, interests, and profession goals.
- ◆ The non-thesis option provides field attachment opportunities for students to experience workplaces and gain insight into child and family services in real-life organisational contexts.



## Class Time and Venue

Classes are held on weekday evenings and on Saturdays, primarily at the Tai Po Campus and/or other venues as decided by the University.

## Participants

Those who work or aspire to work with children and families, and are keen to develop a deeper understanding of their work.

## General Admission Requirements

- ◆ Applicants should hold a recognised Bachelor's degree and/or a postgraduate diploma, preferably in education, psychology or related disciplines. Shortlisted applicants may be required to attend an interview and/or take a test.
- ◆ Applicants whose entrance qualification is obtained from an institution in a non-English speaking system should normally fulfil one of the following minimum English proficiency requirements:
  - ◇ IELTS 6.0; or
  - ◇ Grade C or above in GCSE/GCE OL English; or
  - ◇ A TOEFL score of 80 (internet-based test); or
  - ◇ Band 6 in the Chinese Mainland's College English Test (CET) (a total score of 430 or above and the test result should be valid within two years); or
  - ◇ Other equivalent qualifications.

## Programme Structure

		Credits
<b>Core Courses</b>	<ul style="list-style-type: none"> <li>◆ Understanding Families in Educational and Community Settings</li> <li>◆ Early Child Development and Education across Cultures</li> <li>◆ Current Research in Parent-child Relationships</li> <li>◆ Family Education: Principles and Practices</li> <li>◆ Designing and Evaluating Programmes for Children and Families</li> <li>◆ Research Methods in Education</li> </ul>	18
<b>Elective Courses</b> (Students are required to choose either Option)	<ul style="list-style-type: none"> <li>◆ Thesis Option: Thesis</li> <li>◆ Non-Thesis Option:               <ul style="list-style-type: none"> <li>◇ Counselling in Child and Family Education: Theories and Skills</li> <li>◇ Field Attachment in Child and Family Education</li> </ul> </li> </ul>	6
<b>Total</b>		<b>24</b>

# Master of Arts in Educational Counselling

## Enquiry

☎ Mr Kam (852) 2948 7683

✉ maec@eduhk.hk

🌐 [www.eduhk.hk/ec](http://www.eduhk.hk/ec)

### ○ Programme Code

**Full-time:** A1M094

**Part-time:** C2M013

### ○ Study Mode

One-year Full-time/

Two-year Part-time

### ○ Tuition Fee

HK131,100

(Provisional and subject to adjustment)

### ○ Medium of Instruction

The medium of instruction is mainly English. Chinese is adopted as the language of instruction for practicum training.

## Special Features

- ◆ Extensive training in the theory and practice of counselling.
- ◆ 80 hours of supervised counselling practicum.
- ◆ Innovative approaches and strategies to address the needs of students in kindergartens, primary and secondary schools, and post-secondary institutions.
- ◆ Focus on the collaboration between school and community.
- ◆ Emphasis on counselling ethics, case assessment, conceptualisation, and reflective counselling practice.
- ◆ An outreach model of learning: the practicum is held at satellite counselling sites such as the Christian Family Service Centre, Wong Chuen King Student Development Centre of Chinese YMCA, Rhenish Church Pang Hok Ko Memorial College, Kwun Tong Government Primary School (Sau Ming Road), in collaboration with NGOs, and primary and secondary schools.



## Participants

Professionals in education and social services sectors who wish to embark on specialised training in educational counselling. The programme aims to help participants establish their professional membership in professional counselling associations, finally leading to the status of certified counsellors.

## General Admission Requirements

Applicants should:

- ◆ Hold a recognised Bachelor's degree.
- ◆ Preferably have some background in the fields of education or guidance and counselling, in either the school or community setting.
- ◆ Meet the English proficiency requirements of the University.

Shortlisted applicants may be required to attend an interview or a test.

Applicants whose entrance qualification is obtained from an institution in a non-English speaking system should normally fulfil one of the following minimum English proficiency requirements:

- ◆ IELTS 6.0; or
- ◆ Grade C or above in GCSE/GCE OL English; or
- ◆ A TOEFL score of 80 (internet-based test); or
- ◆ Band 6 in the Chinese Mainland's College English Test (CET) (a total score of 430 or above and the test result should be valid within two years); or
- ◆ Other equivalent qualifications.

## Programme Structure

The programme comprises 30 credits.

		Credits
<b>Core Courses</b>	<ul style="list-style-type: none"> <li>◆ Counselling Theories, Helping Process and Skills</li> <li>◆ Child and Adolescent Counselling</li> <li>◆ Counselling Ethics</li> </ul>	12
<b>Specialist Courses</b>	<ul style="list-style-type: none"> <li>◆ Group Work</li> <li>◆ Contemporary Issues in Child and Adolescent Development</li> <li>◆ Psychoeducational Assessment and Testing</li> </ul>	12
<b>Practicum Training</b>	<ul style="list-style-type: none"> <li>◆ Practicum I</li> <li>◆ Practicum II</li> </ul>	6
<b>Total</b>		<b>30</b>

# Master of Arts in Leading Experiential Learning Activities

## Enquiry

- ☎ (852) 2948 8026
- ✉ [malela@eduhk.hk](mailto:malela@eduhk.hk)
- 🌐 [www.eduhk.hk/malela](http://www.eduhk.hk/malela)

### ○ Programme Code

**Full-time:** A1M102

**Part-time:** C2M033

### ○ Study Mode

One-year Full-time/  
Two-year Part-time

### ○ Tuition Fee

HK\$127,200

(Provisional and subject to adjustment)

### ○ Medium of Instruction

Chinese

## Special Features

- ◆ The very first Master's programme in Hong Kong to focus on experiential learning.
- ◆ Strong focus on whole person development.
- ◆ Multi-disciplinary and inter-disciplinary in nature.
- ◆ Key content areas include pedagogical design, curriculum planning, management and leadership, as well as policy analysis.
- ◆ Practical orientation with a curriculum emphasis on action research, field study and context-based approaches.
- ◆ Experiential learning pedagogy emphasises processes, discoveries and reflections.
- ◆ Strong network with educators and professionals experienced in experiential learning.



## Participants

Teachers, trainers, social workers, community workers, and those who lead extra-curricular activities, Other Learning Experiences (OLE), Experiential Learning/Life-wide Learning activities, or student development work in schools and other institutions.

## General Admission Requirements

- ◆ Applicants should hold a recognised bachelor's degree or equivalent.
- ◆ Applicants whose entrance qualification is obtained from an institution in a non-English speaking system should normally fulfil one of the following minimum English proficiency requirements:
  - ◇ IELTS 6.0; or
  - ◇ Grade C or above in GCSE/GCE OL English; or
  - ◇ A TOEFL score of 80 (internet-based test); or
  - ◇ Band 6 in the Chinese Mainland's College English Test (CET) (a total score of 430 or above and the test result should be valid within two years); or
  - ◇ Other equivalent qualifications.
- ◆ Applicants should have attained one of the following Chinese language proficiency requirements:
  - ◇ Level 3 or above in Chinese Language from the Hong Kong Diploma of Secondary Education (HKDSE); or
  - ◇ Grade E or above in Chinese Language from the Hong Kong Certificate of Education Examination (HKCEE); or
  - ◇ Grade E or above in Chinese Language & Culture (Advanced Supplementary level, AS-level) from the Hong Kong Advanced Level Examination (HKALE).
  - ◇ Other proof of Chinese language proficiency will be considered on an individual merit basis.
- ◆ Applicants should be proficient in Cantonese.

## Programme Structure

The programme comprises 8 courses, including 4 core courses and 4 elective courses (3 credit points/course).

		Credits
<b>Core Courses</b>	◆ Experiential Learning Theories & Practices	12
	◆ Policy Analysis for Leading Experiential Learning	
	◆ Research or Project in Action for Experiential Learning I	
	◆ Research or Project in Action for Experiential Learning II	
<b>Elective Courses</b> (choose 4 courses)	◆ Integrate High Impact Practice in the Design of Service-learning in Schools	12
	◆ Outdoor and Adventure Education	
	◆ Experiential Learning Activities for Career and Life Development Education	
	◆ An Experiential Journey of Embodied Learning: Civic Education	
	◆ Environment, Space and Design for Inspiring Experiences	
◆ Managing Non-local Experiential Learning Programmes		


**Total**


**24**



# Master of Arts in Leading Innovative Learning Organizations

## Enquiry

 (852) 2948 8476

 lilo@eduhk.hk

 www.lilo.eduhk.hk

### ○ Programme Code

**Full-time:** A1M099

**Part-time:** C2M030

### ○ Study Mode

One-year Full-time/  
Two-year Part-time

### ○ Tuition Fee

HK\$138,000

(Provisional and subject to adjustment)

### ○ Medium of Instruction

English

## Special Features

- ◆ Hong Kong's first-ever master's degree specialising in innovation, leadership and education.
- ◆ Empowers **future leaders** in schools and educational services organizations with **international perspectives** and **entrepreneurial mindset** to initiate and sustain innovation for improved leadership practice.
- ◆ Innovative learning including face-to-face delivery in intensive residentials, blended learning, virtual learning, and site-based study.
- ◆ Strong peer networks with educational innovators and experienced leaders.
- ◆ Five taught courses at intensive 3-day residentials.
- ◆ For the intake of 2021-22, a total of 12 Dean's Postgraduate Entrance Scholarships are available.



## Participants

Serving or aspiring leaders in educational services providers including Panel Chairs, Vice Principals, Teacher Leaders, Special Educational Needs Coordinators, Curriculum Leaders/Curriculum Directors, Professional Development Trainers and Start-up Founders/Co-founders.

## General Admission Requirements

Applicants should normally hold a recognised bachelor's degree or equivalent, have three years of professional experience in schools or educational organizations, and leadership experience. Shortlisted applicants may be required to attend an interview.

Applicants whose entrance qualification is obtained from an institution in a non-English speaking system should normally fulfil one of the following minimum English proficiency requirements:

- ◆ IELTS 6.0; or
- ◆ Grade C or above in GCSE/GCE OL English; or
- ◆ A TOEFL score of 80 (internet-based test); or
- ◆ Band 6 in the Chinese Mainland's College English Test (CET) (a total score of 430 or above and the test result should be valid within two years); or
- ◆ Other equivalent qualifications.

## Programme Structure

The programme comprises 5 taught courses and 3 field-based courses (3 credit points/course).

Courses	
<b>July</b> (a 3-day residential for each course)	<ul style="list-style-type: none"> <li>◆ Middle Leaders as Edupreneurs and Innovators</li> <li>◆ Leading Organizational Learning</li> </ul>
<b>Oct-Dec</b> (a 3-day residential for each course)	<ul style="list-style-type: none"> <li>◆ Leading Innovative Communities within and Beyond Organizations</li> <li>◆ Developing High Impact Teams</li> <li>◆ Practitioner Research for Organizational Learning</li> </ul>
<b>Jan-June</b>	<ul style="list-style-type: none"> <li>◆ Virtual Consultancy (Blended Learning)</li> <li>◆ Organizational Learning Field Study</li> <li>◆ Innovation Development Project (Supervised study)</li> </ul>

Mode of delivery may differ depending on public health and safety considerations.

# Master of Arts in Positive Psychology in Education

## Enquiry

☎ (852) 2948 8544

✉ [mappe@eduhk.hk](mailto:mappe@eduhk.hk)

🌐 [www.eduhk.hk/mappe](http://www.eduhk.hk/mappe)

### ○ Programme Code

**Full-time:** A1M100

**Part-time:** C2M031

### ○ Study Mode

One-year Full-time/

Two-year Part-time

### ○ Tuition Fee

HK\$126,000

(Provisional and subject to adjustment)

### ○ Medium of Instruction

English

## Special Features

- ◆ One of the first programmes in Hong Kong to address the interplay between positive psychology and positive education.
- ◆ One of the first programmes in Asia to provide training in positive psychology and positive education.
- ◆ Emphasis on the integration of theory and practice.
- ◆ On successful completion of the course "Youth Mental Health First Aid", students become qualified Youth Mental Health First Aiders, with a Certificate in Youth Mental Health First Aid. The certificate is issued by the Mental Health Association of Hong Kong.



## Participants

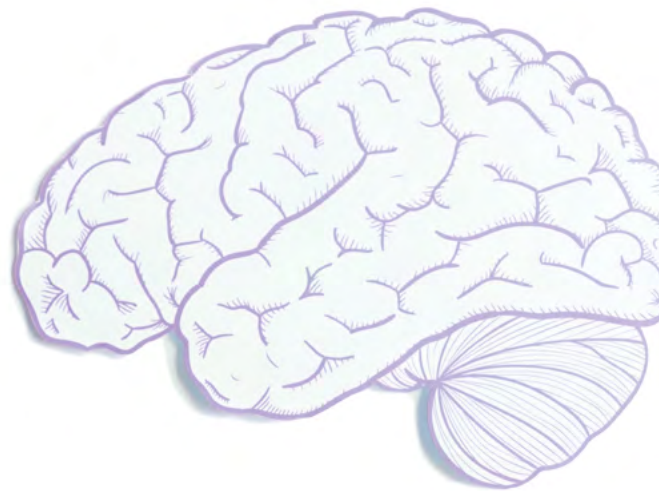
Bachelor degree holders, especially those who wish to build a career or pursue further studies in areas of psychology and education.

## General Admission Requirements

Applicants should hold a recognised Bachelor's degree.

Applicants whose entrance qualification is obtained from an institution in a non-English speaking system should normally fulfil one of the following minimum English proficiency requirements:

- ◆ IELTS 6.0; or
- ◆ Grade C or above in GCSE/GCE OL English; or
- ◆ A TOEFL score of 80 (internet-based test); or
- ◆ Band 6 in the Chinese Mainland's College English Test (CET) (a total score of 430 or above and the test result should be valid within two years); or
- ◆ Other equivalent qualifications.



## Programme Structure

Students are required to complete 5 core courses and 3 (out of 4) elective courses for graduation. Each course carries 3 credits.

		Credits
<b>Core Courses</b>	<ul style="list-style-type: none"> <li>◆ Positive Psychology</li> <li>◆ Positive Education</li> <li>◆ Positive Psychology Interventions</li> <li>◆ Engagement, Meaning, and Happiness in Learning and Teaching</li> <li>◆ Research Methods in Psychology</li> </ul>	15
<b>Elective Courses</b> (choose 3 out of 4 courses)	<ul style="list-style-type: none"> <li>◆ Mindfulness in Education</li> <li>◆ Parenting and Child Flourishing</li> <li>◆ Youth Mental Health First Aid</li> <li>◆ Capstone Project</li> </ul>	9
<b>Total</b>		<b>24</b>



# Executive Master of Arts in International Educational Leadership and Change

## Enquiry

☎ (852) 2948 8702

✉ [ielc@eduhk.hk](mailto:ielc@eduhk.hk)

🌐 [www.eduhk.hk/ielc](http://www.eduhk.hk/ielc)

### ○ Programme Code

C2M004

### ○ Study Mode

Two-year Part-time

Distance Learning

### ○ Tuition Fee

HK\$120,000

(Provisional and subject to adjustment)

### ○ Medium of Instruction

English

## Special Features

- ◆ Online delivery
- ◆ World-class leadership development
- ◆ Scholar-practitioner orientation
- ◆ Flexible structure and innovative learning
- ◆ Global reputation and alliances
- ◆ Regionally-focused teaching
- ◆ International scope and content
- ◆ Networking opportunities
- ◆ Gateway to further study

## Participants

This programme is designed to develop leaders with the capacity to operate successfully in an international leadership environment, and lead educational change in the East Asian context. Practicing and aspiring school leaders, including principals, middle leaders, teacher leaders, curriculum leaders and NGO managers are encouraged to apply. Participants should also be highly motivated, ambitious, willing to question and share expertise.

## Programme Structure

The postgraduate programme comprises 6 courses taught online, a residential School Improvement Institute and a School-based Inquiry Project.

## Online Courses

- ◆ Organizational Behavior
- ◆ Effective School Leadership
- ◆ International Perspectives on Educational Reform
- ◆ Leading Organizational Change
- ◆ Leading Professional Learning
- ◆ Leading Learning Organizations

## IB and Cambridge Certificates

EdUHK is collaborating with the International Baccalaureate to offer IELC participants the opportunity to attain two postgraduate leadership certificates: IB Certificate in Leadership Practice and IB Advanced Certificate in Leadership Research.

The IB certificate in leadership practice is designed for educators and administrators who want to improve their leadership capabilities or career aspirations in an IB context. The IB advanced certificate in leadership research uses rigorous investigative work to give educators and administrators a more profound understanding of IB leadership responsibilities and capabilities.

**IB ADVANCED  
CERTIFICATE**  
IN LEADERSHIP RESEARCH

**IB CERTIFICATE**  
IN LEADERSHIP PRACTICE

From 2021, EdUHK is collaborating with Cambridge Assessment International Education to offer IELC participants the opportunity to attain two postgraduate leadership qualifications: Cambridge International Certificate in Educational Leadership and Cambridge International Diploma in Educational Leadership.

The Cambridge leadership qualifications are designed to help leaders develop their professional thinking and practice, and enhance their (1) knowledge, skills and understanding of effective leadership, (2) leadership practice and (3) school and its effectiveness.

## Credit Transfer

The IELC offers credit transfer for participants who have completed programmes of the Ontario Principals Council, International School Leadership LTD and the English Schools Foundation.



## In Cooperation With



Working with



**Cambridge Assessment  
International Education**

**Professional Development Centre**



The Joseph Lau Luen Hung Charitable Trust  
Asia Pacific Centre for Leadership and Change  
劉鑾雄慈善基金 亞太領導與變革研究中心



## Mode of Study

The courses are delivered by distance education. The use of online technologies enriches the learning experience and provides participants with the flexibility to integrate and manage their study and professional commitments. Online delivery also facilitates communication, work and networking with supervisors, fellow participants and international professional experts introduced in the programme.

Once you enrol as a participant, you will receive Internet access information and an email account. For each course, detailed study materials including lecture notes, sets of readings and assessment tasks will be provided via a dedicated online programme website. Our lecture streaming service will provide you with online access to narrated presentations for all of the courses.

As a participant, you will also have access to support offered by a number of service providers within The EdUHK including the Library, the Department of Education Policy and Leadership (EPL), and The Joseph Lau Luen Hung Charitable Trust Asia Pacific Centre for Leadership and Change (APCLC).

## General Admission Requirements

- ◆ Hold a recognised bachelor's degree
- ◆ Minimum of 3-year professional experience in a leadership role
- ◆ Interview

Applicants whose entrance qualification is obtained from an institution in a non-English speaking system should normally fulfil one of the following minimum English proficiency requirements:

- ◆ IELTS 6.0; or
- ◆ Grade C or above in GCSE/GCE OL English; or
- ◆ A TOEFL score of 80 (internet-based test); or
- ◆ Band 6 in the Chinese Mainland's College English Test (CET) (a total score of 430 or above and the test result should be valid within two years); or
- ◆ Other equivalent qualifications.

# Master of Social Sciences in Psychology

(Schools and Community Settings)

## Enquiry

- ☎ (852) 2948 8544
- ✉ [msocscp@eduhk.hk](mailto:msocscp@eduhk.hk)
- 🌐 [www.eduhk.hk/msocscp](http://www.eduhk.hk/msocscp)



## ○ Programme Code

**Full-time:** A1M083

**Part-time:** C2M017

## ○ Study Mode

One-year Full-time/

Two-year Part-time

## ○ Tuition Fee

HK\$135,000

HK\$146,250 (For those required to take the bridging course)  
(Provisional and subject to adjustment)

## ○ Medium of Instruction

English

## Special Features

- ◆ Unique Master's degree programme in Psychology designed for non-psychology degree holders and concentrated on schools and community settings.
- ◆ Excellent education in psychological principles, application, and research training.
- ◆ Online bridging course for participants with no prior training in psychology.
- ◆ Recognition of prior learning.
- ◆ Choice of elective courses such as Research Project, Educational Psychology, Stress and Coping, etc.
- ◆ Gateway to careers and further studies in the fields of psychology and education such as
  - ◇ Master/PhD in Clinical Psychology
  - ◇ Master/PhD in Educational Psychology
  - ◇ MPhil/PhD in Psychology
  - ◇ Master/PhD in Industrial and Organizational Psychology
  - ◇ Doctor of Education
- ◆ Graduates are eligible to apply for membership of Hong Kong Psychological Society (HKPS) and the British Psychological Society (BPS)\*.

\* Subject to approval from the Hong Kong or British Psychological Societies for individual applications.

## Participants

Non-psychology degree holders, especially educators or other community workers, who wish to embark on a path to professional training and career development in psychology.

## Study Venue and Time

Full-time students are expected to complete the programme in 1 year, while part-time students are expected to complete the programme in 2 years. Full-time students will attend 4 classes per week and part-time students will attend 2 classes per week, usually held on weekday evenings and Saturdays at the Tai Po Campus. Classes may also be held on weekday or weekend at the Tseung Kwan O Study Centre or the Kowloon Tong Satellite Study Centre.

## Programme Structure

Students are required to complete 8 core courses (24 cps) and 3-4 elective courses (12 cps). Each course carries 3 credits, except the "Research Project in Psychological Studies" (6 credits).

		Credits
<b>Bridging Course*</b>	◆ Basic Principles of Psychology*	(3)
<b>Core Courses</b>	◆ Abnormal Psychology ◆ Biological Psychology ◆ Cognitive Psychology ◆ Human Development across the Lifespan ◆ Personality Psychology ◆ Research Methods in Psychological Studies ◆ Social Psychology ◆ Statistical Methods in Psychological Studies	24
<b>Elective Courses</b> (Students are required to take 12 cps) <sup>#</sup>	◆ Educational Psychology (3cps) ◆ Interpersonal Communication Skills (3cps) ◆ Learning Theories and Processes (3cps) ◆ Research Project in Psychological Studies (6cps) ◆ Stress and Coping (3cps)	12
<b>Total</b>		<b>36</b>

## General Admission Requirements

Applicants should hold a recognised Bachelor's degree and preferably have introductory psychology training at a recognised tertiary institution. Shortlisted applicants may be required to attend an interview/take a test.

Applicants whose entrance qualification is obtained from an institution in a non-English speaking system should fulfil one of the following minimum English proficiency requirements:


- ◆ IELTS 6.0; or
- ◆ Grade C or above in GCSE/GCE OL English; or
- ◆ A TOEFL score of 80 (internet-based test); or
- ◆ Other equivalent qualifications.

\* Applicants with a recognised Bachelor's degree who have not previously completed a course of Introductory Psychology (or equivalent) offered by a recognised university or institution must complete this online bridging course before taking other courses in the programme. The credit points earned upon completion of this course will not count towards the total credit points of the programme.


<sup>#</sup> Department has the discretion of not to offer any elective courses

# Master of Science in Educational Speech-Language Pathology and Learning Disabilities

## Enquiry

 (852) 2948 7689

 eslpld@eduhk.hk

 [www.eduhk.hk/eslpld](http://www.eduhk.hk/eslpld)

## ○ Programme Code

A2M080

## ○ Study Mode

Two-year Full-time

## ○ Tuition Fee

HK\$401,436

(Provisional and subject to adjustment)

## ○ Medium of Instruction

English

## Special Features

- ◆ The first master's programme in Hong Kong that studies both speech-language pathology and learning disabilities to offer professional training for the next generation of speech-language pathologists.
- ◆ The programme has been fully endorsed by the Hong Kong Institute of Speech Therapists ([www.hkist.org.hk](http://www.hkist.org.hk)). Graduates of the programme are eligible to apply to be "Member of Register of Speech Therapists accredited by Department of Health".
- ◆ Curriculum follows the standards of the American Speech Language-Hearing Association (ASHA, [www.asha.org](http://www.asha.org)), with additional components to cater for the needs of different educational contexts and Chinese communities.
- ◆ A unique, innovative and comprehensive postgraduate training programme — built on a dual-core framework (speech-language pathology and learning disabilities), grounded in contemporary research and evidence-based practices, focused on reflection and inquiry.
- ◆ Purpose-built clinical research unit with state-of-the-art facilities for training, client/community services and research.
- ◆ Extensive practicum component, supervised by qualified speech-language pathologists in Hong Kong and/or nearby regions.

你好

## Special Features (cont.)

---

- ◆ Programme managed by the Department of Special Education and Counselling, the only affiliated society of the International Association of Logopedics and Phoniatrics (IALP, [www.ialp.info](http://www.ialp.info)) in China.
- ◆ Students have the opportunity to participate in the annual European Speech-Language Therapy Summer School.

The MScESLPLD programme is an eligible programme of the UGC's "Targeted Taught Postgraduate Programmes Fellowships Scheme" for 2021 intake. Meritorious students may receive a maximum of HK\$120,000 to subsidise their tuition fees.

## Programme Curriculum

---

The curriculum is modelled on that of the American Speech-Language-Hearing Association (ASHA), the professional and credentialing association for audiologists, speech-language pathologists and scientists in the field. The programme is more than just a medical study of speech-language pathology; it is designed to focus on supporting students in educational settings. The integration of the two disciplines of speech-language pathology and learning disabilities makes this programme a unique, innovative, and comprehensive postgraduate training.

Professional Study includes a range of professional courses to help participants build a strong knowledge of typical and disordered human communication, learning and swallowing processes in individuals from infancy to late adulthood, and principles and methods of assessment and intervention. Practicum is an integral part of the MScESLPLD curriculum, and a bridge between classroom learning and the realities of practice. Practicum sessions will be conducted to give participants the opportunity to apply subject knowledge, assessment and intervention skills. Participants will have access to different facets of the community, and work with diverse client communities.

Research Methods provides an in-depth study of research design, methods and applications to foster participants' critical thinking and problem-solving. Participants will undertake research and investigatory analysis that help in their research project and future professional practice.

The Evidence-based Capstone Project enables participants to work on a specialized topic related to their study in the MScESLPLD under the guidance of a supervisor. It requires participants to demonstrate their subject knowledge and skills through developing an individual project. This will help participants develop research and academic writing skills, as well as the scientific attitudes and values required to advance in their future career.



## Participants

Those who wish to embark on a professional career in speech-language pathology.

## Programme Structure

Participants will be required to study a full load of subjects with 12-18 cps per semester. Courses will be delivered face-to-face<sup>#</sup>, involving a combination of lectures and tutorials.

		Credits
<b>Professional Study</b>	<ul style="list-style-type: none"> <li>◆ Medical Aspects of Special Education, Communication Disorders and Learning Disabilities</li> <li>◆ Acoustics for Speech, Language, Hearing and Learning</li> <li>◆ Educational Counselling, Therapeutic Process and Teaching Pedagogy</li> <li>◆ Phonetics and Phonology for Education</li> <li>◆ Language Development</li> <li>◆ Speech, Language and Communication Disorders</li> <li>◆ Bilingualism and Bilingual Education</li> <li>◆ Structure of Chinese for Education</li> <li>◆ Audiology and Aural Rehabilitation in Educational Settings</li> <li>◆ Assessment and Intervention for Speech, Language, Communication and Learning</li> <li>◆ Learning Disabilities, Reading and Writing Disorders</li> <li>◆ Language Disorders in Children and Adolescents</li> <li>◆ Supporting Students with Social, Emotional, Behavioural and Developmental Disabilities in the Classroom</li> <li>◆ Advanced Studies I / II / III</li> </ul>	48
<b>Practicum</b>	<ul style="list-style-type: none"> <li>◆ Practicum I / II</li> <li>◆ Advanced Practicum in Educational Settings I / II</li> </ul>	21
<b>Research Methods</b>	<ul style="list-style-type: none"> <li>◆ Research Methods and Evidence-based Practice</li> <li>◆ Advanced Research Methods</li> </ul>	6
<b>Evidence-based Capstone Project</b>		6
<b>Total</b>		<b>81*</b>

\* Each course carries 3 cps, except the Practicum Courses (3 - 6 cps) and Evidence-based Capstone Project (6 cps).

<sup>#</sup> The mode of learning and teaching is subject to the programme's final arrangements.



## General Admission Requirements

- ◆ Applicants should hold a recognised Bachelor's degree and/or a postgraduate diploma in education or other disciplines related to psychology, linguistics, speech and hearing sciences or other disciplines the selection panel deems appropriate.
  - ◆ Applicants whose entrance qualification is obtained from an institution in a non-English speaking system should have attained one of the following minimum English proficiency requirements:
    - ◇ IELTS 6.0; or
    - ◇ Grade C or above in GCSE/GCE OL English; or
    - ◇ A TOEFL score of 80 (internet-based test); or
    - ◇ Band 6 in the Chinese Mainland's College English Test (CET) (a total score of 430 or above and the test result should be valid within two years); or
    - ◇ Other equivalent qualifications.
  - ◆ Applicants should have attained one of the following Chinese language proficiency requirements:
    - ◇ Level 3 or above in Chinese Language from the Hong Kong Diploma of Secondary Education (HKDSE); or
    - ◇ Grade E or above in Chinese Language from the Hong Kong Certificate of Education Examination (HKCEE); or
    - ◇ Grade E or above in Chinese Language & Culture (Advanced Supplementary level, AS-level) from the Hong Kong Advanced Level Examination (HKALE).
    - ◇ Other proof of Chinese language proficiency will be considered on an individual merit basis.
  - ◆ Applicants should be proficient in Cantonese.
- Shortlisted applicants are required to attend an admission interview and take a test. The success of the application will depend heavily on the performance of the interview and the test.

# Master of Teaching

## Enquiry

☎ (852) 2948 8657

✉ [mteach@eduhk.hk](mailto:mteach@eduhk.hk)

🌐 [www.eduhk.hk/mteach](http://www.eduhk.hk/mteach)

### ○ Programme Code

**Full-time:** A1M087

**Part-time:** C2M019

### ○ Study Mode

One-year Full-time/

Two-year Part-time

### ○ Tuition Fee

**Full-time:** HK\$126,000

**Part-time:** HK\$120,000

(Provisional and subject to adjustment)

### ○ Medium of Instruction

The medium of instruction is mainly English. Cantonese and Putonghua are adopted as the language of instruction for some courses, as appropriate.

## Special Features

- ◆ The very first Master of Teaching Programme in Hong Kong to focus on pedagogical practices at an advanced level.
- ◆ "To identify teachers in the heart of quality education" – a mission of fostering teacher leaders who can rally school teams on reforms in changing school contexts.
- ◆ Latest research findings and evidence-based teaching practices and pedagogies adopted as learning materials.
- ◆ Delivered by learner-oriented approach which caters for participants' diverse needs, despite of their different school work experience.
- ◆ Nurtures teacher leaders via reflection-in-practice and reflection-through-practice.
- ◆ Supports curriculum reform and school-based work experience.
- ◆ The practitioner-based research project is the programme highlight, serving to make a difference in learning through practice, reflection, and evaluation.



## Special Features (cont.)

---

- ◆ Designed and implemented by a team of experts and subject specialists, with professional qualifications to provide strong scaffolding with their expertise.
- ◆ Managed by the Department of Curriculum and Instruction. The department has a track record of providing high-quality teaching and research in the areas of curriculum, teaching, assessment, and teacher professional development.

## Participants

---

This programme is suitable for fresh graduates and teachers at different stages of their careers, interested in pursuing advanced studies preparing them for future school leadership.

## Study Time and Venue

---

Classes are held primarily at the Tai Po Campus and occasionally at the Tseung Kwan O Study Centre, and/or Kowloon Tong Satellite Study Centre. Students will normally attend classes on weekday evenings and on Saturdays.

## Specialisations<sup>#</sup>

---

Participants can choose one of the following specialisations:

- ◆ Curriculum Development
- ◆ Early Childhood Education and Family Studies
- ◆ Special Education
- ◆ 中國語言文學的學與教 (Learning and Teaching of Chinese Language and Literature) (for full-time study only)
- ◆ English Language Education
- ◆ Teaching Greater China Studies in Liberal Studies Curriculum (for full-time study only)
- ◆ Teaching Physical Education - An Advanced Study (for full-time study only)

---

<sup>#</sup> Individual specialisations may not be offered every year.

## Programme Structure

Participants are required to complete a total of 8 courses (24 credit points) for graduation.

	Credits
<b>Core Courses</b> (3 credit points / course) <ul style="list-style-type: none"> <li>◆ Teaching Strategies for Enhancing Student Learning</li> <li>◆ Teacher Leadership and School Improvement</li> <li>◆ Learning in the Inclusive Classroom</li> <li>◆ Methods in Research for Learning</li> <li>◆ Practitioner-based Research Project</li> </ul>	15
<b>Specialisations<sup>#</sup></b> 3 courses (3 credit points / course) from one of the following specialisations <ul style="list-style-type: none"> <li>◆ Curriculum Development</li> <li>◆ Early Childhood Education and Family Studies</li> <li>◆ Special Education</li> <li>◆ 中國語言文學的學與教 (Learning and Teaching of Chinese Language and Literature) (for full-time study only)</li> <li>◆ English Language Education</li> <li>◆ Teaching Greater China Studies in Liberal Studies Curriculum (for full-time study only)</li> <li>◆ Teaching Physical Education - An Advanced Study (for full-time study only)</li> </ul>	9
<b>Total</b>	<b>24</b>

## Recognition of Prior Learning

Applicants may apply for credit transfer in the Master of Teaching Programme for up to 9 credit points:

- ◆ Graduates from the 5-year Bachelor of Education Programmes of the EdUHK may apply for credit transfer if they have studied MTeach specialisation courses as electives in their senior years of study.
- ◆ Participants have attended courses for the Certificate of Professional Development Programmes or other Master's degree programmes of which the standards and contents match those of the MTeach Programme's courses, may apply for credit transfer.

## General Admission Requirements

Applicants should hold a recognised bachelor's degree and a recognised teacher's qualification, or equivalent.

Applicants may be required to attend an interview/test.

Applicants whose entrance qualifications were obtained from an institution in a non-English speaking system should have attained one of the following English proficiency requirements, which may be subject to adjustment.

- ◆ IELTS 6.0; or
- ◆ Grade C or above in GCSE/GCE OL English; or
- ◆ A TOEFL score of 80 (internet-based test); or
- ◆ Band 6 in the Chinese Mainland's College English Test (CET) (a total score of 430 or above and the test result should be valid within two years); or
- ◆ Other equivalent qualifications.

# Postgraduate Diploma in Education (Early Childhood Education)

## Enquiry

☎ (852) 2948 8112

✉ lyho@eduhk.hk

🌐 [www.eduhk.hk/fehhd](http://www.eduhk.hk/fehhd)

### ○ Programme Code

**Full-time:** A1P018

**Part-time:** C2P040

### ○ Study Mode

One-year Full-time/  
Two-year Part-time

### ○ Tuition Fee (per annum)

**One-year Full-time:**

HK\$42,100 (local students)

HK\$140,000 (non-local students)

**Two-year Part-time:**

HK\$21,050 (local students)

HK\$70,000 (non-local students)

(Provisional and subject to adjustment)

### Special Features

- ◆ Integration of theory and practice.
- ◆ Eligibility to apply for registration as Qualified Kindergarten Teachers, Child Care Workers, and Child Care Supervisors.
- ◆ Attainment of professional qualifications as required of kindergarten principals\*.
- ◆ Clearly articulated pathway to child care professionals.
- ◆ Recognition by the Education Bureau and the Social Welfare Department of HKSAR.

\* Graduates are recognised by the Education Bureau (EDB) as having met of the requirements for registration as a kindergarten principal. Registration of your professional qualifications as a kindergarten principal is subject to your relevant work experience and further training, and is subject to EDB's final approval.

## Participants

Untrained early childhood graduate teachers or degree holders who wish to embark on career development in early childhood education and professional teacher training. Part-time participants must be serving teachers in early childhood education settings in Hong Kong.

## Programme Structure

Participants of full-time programme are normally required to attend four study days per week in semester I, and three days per week in semester II. Participants of part-time programme are normally required to attend two 3-hour classes per week in each semester.

For full-time programme, classes are normally held in daytime/evening on weekdays and/or Saturday at Tai Po Campus. For part-time programme, classes are normally held in evening on weekdays and/or Saturday at Tai Po Campus. This programme comprises a programme orientation and the following components:

	Credits
General Methods	6
Education Studies	15
Electives	3
Field Experience	6
<b>Total</b>	<b>30</b>



## Information Technology Competency In Education (ITCE)

Students who are enrolled in education programmes [leading to Qualified Teacher Status (QTS)/Qualified Kindergarten Teacher (QKT)] are required to complete the IT e-Portfolio for checking and pass all the required courses in the programme to demonstrate the attainment of Information Technology Competency in Education (ITCE) before graduation.



For detailed information, please refer to [www.eduhk.hk/mit/view.php?secid=3022](http://www.eduhk.hk/mit/view.php?secid=3022)

## Medium of Instruction

### Full-time Programme

The medium of instruction is Chinese and/or English for the full-time programme. Applicant's adequate proficiency in both Chinese and English is required, if appropriate. English is adopted as the language of instruction for relevant courses. Combined classes with students of the part-time programme would be arranged where necessary.

### Part-time Programme

The part-time programme offers a Chinese stream and an English stream. Participants have to choose which medium of instruction they prefer upon application.

### Chinese as the medium of instruction [CMI]

The medium of instruction is mainly Chinese. English or Putonghua may be adopted as the language of instruction for relevant courses, as appropriate.

### English as the medium of instruction [EMI]

The medium of instruction is mainly English.

## General Admission Requirements

Applicants should:

### One-year Full-time Programme

- ◆ Hold a recognised Bachelor's degree, or equivalent.

### Two-year Part-time Programme

- ◆ Hold a recognised Bachelor's degree, or equivalent; and
- ◆ Be serving teachers\* in early childhood education settings registered with the Education Bureau in Hong Kong.

\* Applicants are required to teach a regular class of at least 10 children aged 3-6 years old with minimum of 3 hours per day during the teaching practice period. Please submit the completed recommendation form with your application.

Shortlisted applicants may be required to attend an interview.



## Language Requirements

### English Language Requirements

Applicants should:

- ◆ Hold a recognised Bachelor's/higher degree conferred by a local university/institution or an institution in English speaking system; or
- ◆ Fulfil one of the following minimum English proficiency requirements:
  - ◇ IELTS 6.0 (Academic);
  - ◇ A TOEFL score of 80 (internet-based test);
  - ◇ GCSE/GCE OL English Grade C or above;
  - ◇ GCE AS Level or AL Level English Grade E or above;
  - ◇ Band 6 in the Chinese Mainland's College English Test (CET 6) (a total score of 430 or above and the test result should be valid within two years); or
  - ◇ Other equivalent qualifications.

### Chinese Language Requirements

Applicants should:

- ◆ Hold a recognised Bachelor's/higher degree conferred by a local university/institution or an institution in Chinese speaking system; or
- ◆ Obtain Level 2/Grade E or above in the HKCEE Chinese Language (applicable to holders of a local recognised Associate Degree/Higher Diploma); or
- ◆ Obtain Grade E or above in ASL Chinese Language & Culture in the HKALE; or
- ◆ Obtain Level 3 or above in Chinese Language in the HKDSE.





# Postgraduate Diploma in Education

(Professional and  
Vocational Education)

## Enquiry

☎ (852) 2948 8031

✉ ahywong@eduhk.hk

🌐 [www.eduhk.hk/fehd](http://www.eduhk.hk/fehd)

### ○ Programme Code

C2P041

### ○ Study Mode

Two-year Part-time

### ○ Tuition Fee (per annum)

HK\$21,050 (local students)

### ○ Medium of Instruction

The medium of instruction is mainly Chinese. English and/or Putonghua is adopted as the language of instruction for relevant courses, as appropriate.

## Special Features

Graduates of the programme are expected to:

- ◆ apply and adapt key concepts and theories of education and learning within the contexts of PVE;
- ◆ work effectively within their own contexts by understanding, evaluating and interpreting the contexts of PVE from multiple perspectives;
- ◆ design and implement learning environments that are learner-centered and adopt a learning-by-doing strategy oriented to lifelong learning;
- ◆ develop and implement online teaching strategies to support student learning;
- ◆ develop and apply a range of formative and summative assessment strategies to aid student learning and to ensure that students meet the required standards; and
- ◆ continue to learn within rapidly changing educational environments through the skills of enquiry, application and reflection.

## Programme Structure

This is a two-year part-time programme comprising 30 credit points (cps). Classes are normally held on weekday evening(s) and/or on Saturday(s) at Tseung Kwan O Study Centre, Kowloon Tong Satellite Study Centre and/or Tai Po Campus as decided by the University. The programme consists of a programme orientation and the following components:

	Credits
General Methods	6
Education Studies	12
Electives	6
Field Experience	6
<b>Total</b>	<b>30</b>

## Information Technology Competency In Education (ITCE)

Students who are enrolled in education programmes [leading to Qualified Teacher Status (QTS)] are required to complete the IT e-Portfolio for checking and pass all the required courses in the programme to demonstrate the attainment of Information Technology Competency in Education (ITCE) before graduation.



For detailed information, please refer to [www.eduhk.hk/mit/view.php?secid=3022](http://www.eduhk.hk/mit/view.php?secid=3022)

## Entrance Requirements

Applicants should normally:

- ◆ Hold a recognised Bachelor's degree, or equivalent; and
- ◆ Hold a teaching post in a PVE context.

Priority will be given to applicants already teaching Applied Learning subjects.

Shortlisted applicants may be required to attend an interview.







Faculty of Education  
and Human Development  
教育及人類發展學院



[www.eduhk.hk/fehd](http://www.eduhk.hk/fehd)



[www.instagram.com/fehdeduhk](https://www.instagram.com/fehdeduhk)



[www.facebook.com/fehd.eduhk](https://www.facebook.com/fehd.eduhk)



(852) 2948 8576



[fehd@eduhk.hk](mailto:fehd@eduhk.hk)



D1-G/F-02, The Education University of Hong Kong



**Apply Now**  
[eduhk.hk/acadprog/online](http://eduhk.hk/acadprog/online)

Every effort has been made to ensure that information contained in this booklet is correct. Changes to any aspects of the programmes may be made from time to time due to unforeseeable circumstances beyond our control and the University reserves the right to make amendments to any information contained in this booklet without prior notice. The University accepts no liability for any loss or damage arising from any use or misuse of or reliance on any information contained in this booklet.

Any aspect of the course and course offerings (including, without limitation, the content of the course and the manner in which the course is taught) may be subject to change at any time at the sole discretion of the University. Without limiting the right of the University to amend the course and its course offerings, it is envisaged that changes may be required due to factors such as staffing, enrolment levels, logistical arrangements and curriculum changes.

The information provided in this booklet is for reference only and is subject to change without prior notice. EdUHK reserves the right of final decision and interpretation in the case of any dispute.