



大圍港鐵站穿梭巴士服務 Tai Wai MTR Station Shuttle Bus Service

<<For EdUHK Students and Staff Only 教大學生及教職員專用>>

從 2026年 1月 5日 生效 Effective from 5 January 2026

由 大圍站 開出往 大埔校園 Departure from Tai Wai MTR Station to Tai Po Campus							
服務日期 Service Day	開出時間Schedule Departures					登車/落車地點 Boarding/ Alighting Point	
	時Hour	分Min					
星期一至五 Mondays to Fridays 公眾假期除外 Except Public Holidays	7am			30	45	55*	
	8am	00		15	30	45	55*
	9am	00		15	30	45	
	10am	00					
	5pm				40*	45	55*
大圍站公共運輸交匯處 (B出口) Tai Wai Station Public Transport Interchange (Exit B)							

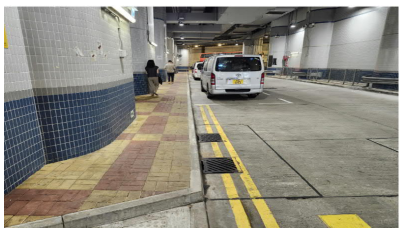
由 大埔校園 開出往 大圍站 Departure from Tai Po Campus to Tai Wai MTR Station									
服務日期 Service Day	開出時間Schedule Departures								登車/落車地點 Boarding/ Alighting Point
	時Hour	分Min							
星期一至五 Mondays to Fridays 公眾假期除外 Except Public Holidays	5pm			25	30*	35	40*	45	B1-B2座之間上落客區 Block B1-B2 Boarding / Drop-off Area
	6pm		20**	25	30**	35**	40		
	9pm	15*	20	25*	30	35*	40*		

* 從1月5日起，逢星期一至五之額外加班車(公眾假期除外)Additional trips on Monday - Friday from 5 Jan 2026 (except Public Holiday)

** 從1月5日起，逢星期一至五之額外加班車(公眾假期及1月16日陸運會除外)

Additional trips on Monday - Friday from 5 Jan 2026 (except Public Holiday and Athletic Meet on 16 Jan 2026)

登車/落車地點 / 巴士相片 Photos of Boarding/alighting Points and Bus



大圍站公共運輸交匯處 (B 出口)
Tai Wai Station
Public Transport Interchange (Exit B)



B1-B2 座之間上落客區
Block B1-B2 Boarding / Drop-off Area



營運商巴士模樣
Outlook of the bus

備註 Notes

- 有關牌照至2026年6月30日，運輸署亦會不時作出審視
The license approved is up to 30 June 2026 and the Transport Department will be reviewing the license from time to time
- 有關穿梭服務7月1日至8月31日之學校假期期間暫停服務
The shuttle service will be temporarily suspended during the School Summer Break from 1 July to 31 August
- 登車認證：請於車上的認證機拍職員證/學生證，否則將會被拒登車
Verification when boarding: Please tap your staff /student card on the access control card reader installed on U-shuttle bus.
Please be reminded that you will not be allowed to take the bus if you fail to produce your cards.
- 單程車資Bus Fare per trip

	職員Staff	學生Student
原有車資Original Fares	\$12.2	\$7.3
推廣車資Promotional fares*	\$10.0	\$6.0

*在服務開辦初期推出上述推廣車費，或會變動。Promotional fares during the initial launch period will be subject to change.
請在大埔校園B1-B2座之間上落客區以八達通卡在上車前(離校班次)或落車後(回校班次)付車費。
Please pay bus fare by Octopus Cards before boarding (for outbound trips) or after alighting (for inbound trips) at Block B1-B2 Drop-off Area.
- 星期六、星期日及公眾假期不設服務。
No service on Saturdays, Sundays and Public Holidays.
- 登車時間或會因交通情況而有出入。
Pick-up times may vary due to traffic conditions.
- 請排隊候車。
Please queue at bus stops.
- 巴士服務承辦商(熱線)：捷迅旅運有限公司 (6689 9681)
Bus Service Provider (Hotline): Jackson Coach Hire Service Ltd (6689 9681)