



## 大圍港鐵站穿梭巴士服務

### Tai Wai MTR Station Shuttle Bus Service

<<For EdUHK Students and Staff Only 教大學生及教職員專用>>

從 2025年 12月 8日 生效 Effective from 8 December 2025

#### 由 大圍站 開出往 大埔校園 Departure from Tai Wai MTR Station to Tai Po Campus

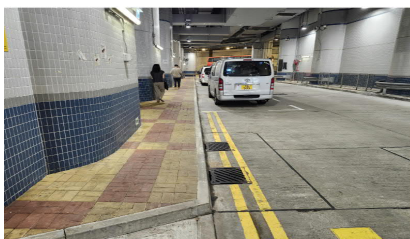
服務日期 Service Day	開出時間Schedule Departures					登車/落車地點 Boarding/alighting Point
	時Hour	分Min				
星期一至五 Mondays to Fridays  公眾假期除外 Except Public Holidays	7am	30			45	✖*
	8am	00	15	30	45	大圍站公共運輸交匯處 (B出口) Tai Wai Station Public Transport Interchange (Exit B)
	9am	00	15	30	45	
	10am	00				
	5pm		✖*	45	✖*	

#### 由 大埔校園 開出往 大圍站 Departure from Tai Po Campus to Tai Wai MTR Station

服務日期 Service Day	開出時間Schedule Departures							登車/落車地點 Boarding/alighting Point
	時Hour	分Min						
星期一至五 Mondays to Fridays	5pm			25*		35	45*	B1-B2座之間上落客區 Block B1-B2 Boarding / Drop-off Area
	6pm		✖*	25*	✖		40*	
	公眾假期除外 Except Public Holidays	9pm	✖*	20*	✖*	30	✖	

從12月1日起，逢星期一至五之額外加班車(公眾假期除外)Additional trips on Monday - Friday from 1 December 2025 (except Public Holiday)

#### 登車/落車地點 / 巴士相片 Photos of Boarding/alighting Points and Bus



大圍站公共運輸交匯處 (B出口)  
Tai Wai Station  
Public Transport Interchange (Exit B)



B1-B2 座之間上落客區  
Block B1-B2 Boarding / Drop-off Area



營運商巴士模樣  
Outlook of the bus

#### 備註 Notes

- 有關牌照至2026年6月30日，運輸署亦會不時作出審視  
The license approved is up to 30 June 2026 and the Transport Department will be reviewing the license from time to time
- 有關穿梭服務7月1日至8月31日之學校假期期間暫停服務  
The shuttle service will be temporarily suspended during the School Summer Break from 1 July to 31 August
- 登車認證：請於車上的認證機拍職員證/學生證，否則將會被拒登車  
Verification when boarding: Please tap your staff /student card on the access control card reader installed on U-shuttle bus.  
Please be reminded that you will not be allowed to take the bus if you fail to produce your cards.

單程車資Bus Fare per trip	職員Staff	學生Student
原有車資Original Fares	\$12.2	\$7.3
推廣車資Promotional fares*	\$10.0	\$6.0

\*在服務開辦初期推出上述推廣車費，或會變動。Promotional fares during the initial launch period will be subject to change.

請在大埔校園B1-B2座之間上落客區以八達通卡在上車前(離校班次)或落車後(回校班次)付車費。  
Please pay bus fare by Octopus Cards before boarding (for outbound trips) or after alighting (for inbound trips) at Block B1-B2 Drop-off Area.

- 星期六、星期日及公眾假期不設服務。  
No service on Saturdays, Sundays and Public Holidays.
- 登車時間或會因交通情況而有出入。  
Pick-up times may vary due to traffic conditions.
- 請排隊候車。  
Please queue at bus stops.
- 巴士服務承辦商(熱線)：捷迅旅運有限公司 (6689 9681)  
Bus Service Provider (Hotline): Jackson Coach Hire Service Ltd (6689 9681)