

Transportation – U Shuttle Bus

Queuing Arrangement - New

University Station (Inbound)



Block A Entrance Plaza (Outbound)



To streamline boarding and minimize delays, please

- ✓ Follow instructions of guards
- ✓ Ready your student cards before boarding
- ✓ Take your seat from the rear row

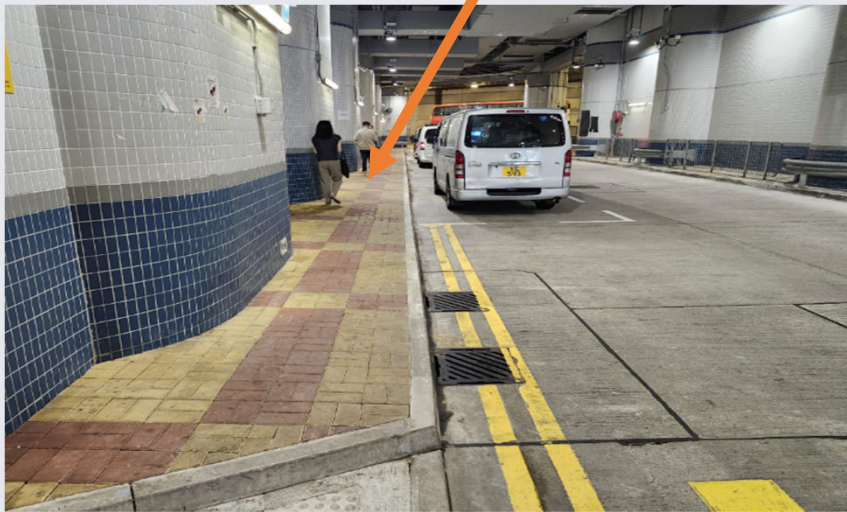
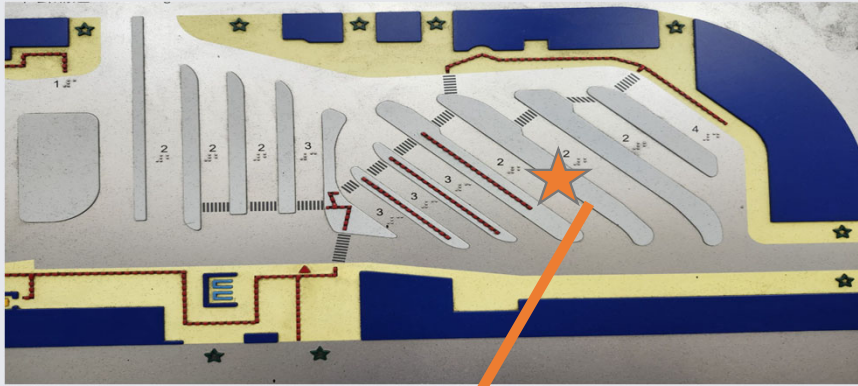


Follow instruction of guards and floor markings to queue

- Monday - Friday (except Public Holidays)
 - Inbound Service: 7:40am to 11:00pm
 - Outbound Service: 8:05am to 10:15pm
 - Frequency: 5 to 10 min for peak hours; & 10 to 15 min for non-peak hours
 - Extra trips at irregular time will also be added subject to large demand
- Saturday (except Public Holidays)
 - Inbound Service: 8:00am to 7:00pm
 - Outbound Service: 8:10am to 7:20pm
 - Frequency: 10 to 15 min

Transportation – Tai Wai Shuttle

Queuing Arrangement - New



To streamline boarding and minimize delays, please

- ✓ Follow instructions of guards
- ✓ Ready your student cards before boarding
- ✓ Take your seat from the rear row

- ☐ Monday – Friday (except Public Holidays)
 - Inbound Service: 7:30am – 10:00am; & 5:40pm – 5:50pm
 - Outbound Service: 5:25pm – 5:40pm; 6:25pm – 6:40pm; & 9:15pm – 9:35pm