

Subject: Geography

Topic: Climate

Sub-topic: Climate in temperate latitude regions

Level: S.4

Learning objectives;

1. Content:

Students should be able to describe and explain different climates in the world and the impact of climate on human activities

2. Language:

Students should be able to use the following subject-specific vocabulary and sentence patterns to describe and explain different climates in the world and the impact of climate on human activities:

annual mean temperature, annual range of temperature, annual rainfall, temperate maritime climate, drought, food shortage, famine, tropical cyclone, flooding, loss of lives and property

_____ *because* _____.

_____ *causes / results in* _____.

_____ *is affected by* _____.

S.4 Geography

Climate in temperate latitude regions

Worksheet 1

Name: _____ Class: _____ No.: _____ Date: _____



Writing

- With reference to Figures 1 and 2, complete the table on the next page to show the similarities and differences between the climatic characteristics of Yantai and Qiemo. You can talk to your neighbour about your ideas.

Figure 1 Location of Yantai and Qiemo

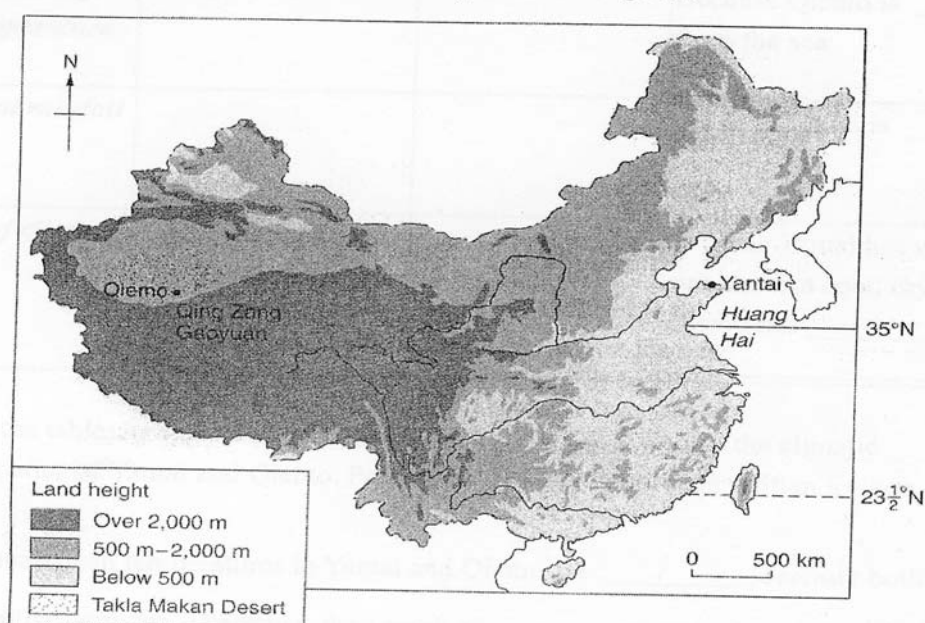
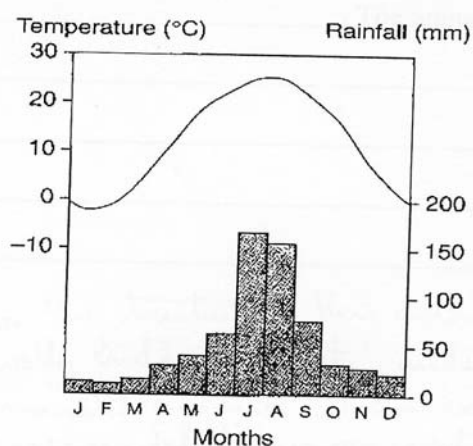
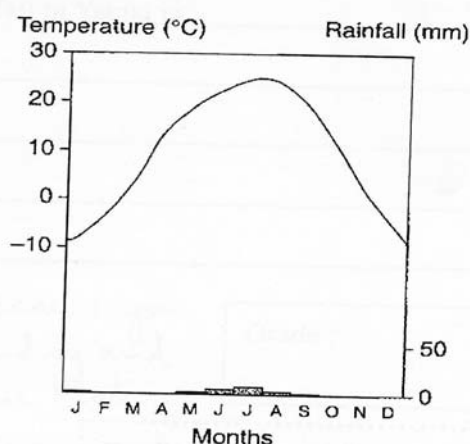


Figure 2 Climatic graphs of Yantai and Qiemo



Annual range of temperature: 27°C
 Annual mean temperature: 12°C
 Annual rainfall: 654 mm

A climatic graph of Yantai



Annual range of temperature: 33°C
 Annual mean temperature: 10°C
 Annual rainfall: 20 mm

A climatic graph of Qiemo

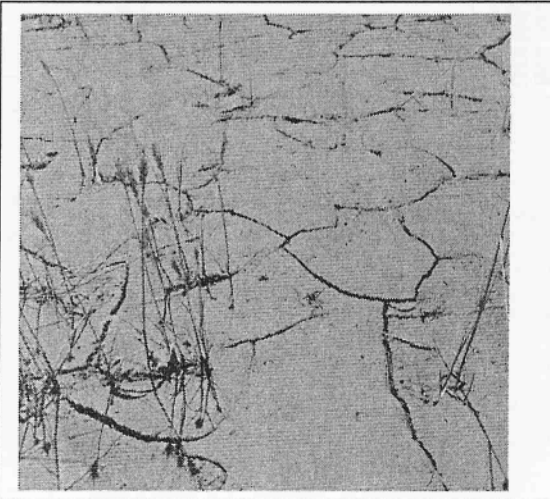
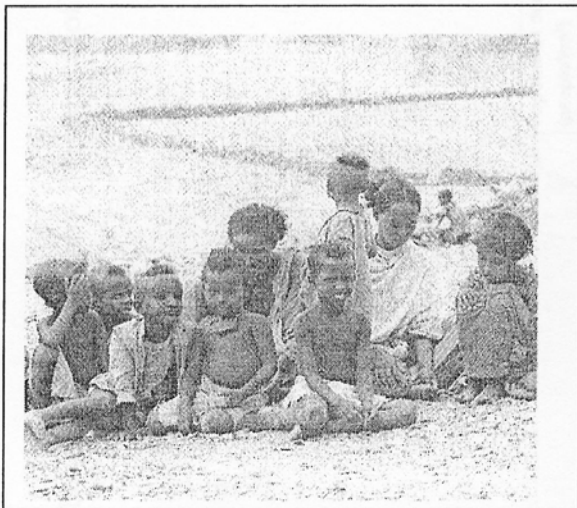
	Climatic characteristics of		Reasons
	Yantai	Qimo	
1. Annual mean temperature			Both places lie at similar latitudes. They receive _____ amount of insolation.
2. Annual range of temperature			Qimo is _____ from the sea
3. Annual rainfall			Yantai is _____ from the sea
4. Type of climate	Temperate maritime		Yantai has warm, wet summer but cool, dry winter. Qimo has _____ _____ _____

2. With reference to the table above, write a short paragraph to describe and explain the climatic characteristic climate of Yantai and Qimo. Part of the paragraph has been written for you.

The annual mean temperatures in Yantai and Qimo are _____ *because both places* lie at similar latitudes. They therefore receive a _____ amount of insolation. However, the annual range of temperature in Yantai is _____ than Qimo *because Qimo is* _____ . The annual rainfall in Yantai is _____

Procedures to carry out Learning Activity 2

1. Each student receive a set of worksheet about the impact of **climate** on people.
2. Task 1 - students complete it individually.
3. Task 2 - students pair up and practise orally the sentence pattern
4. Teacher ask students to give their answer to check their understanding
5. Task 3 - students complete it individually.
6. Task 4 - students pair up and practise orally the sentence pattern
7. Teacher ask students to give their answer to check their understanding
8. Students refer to the following photos in the textbook and work in pair to further discuss the impacts of climate on people. Useful words like: *drought, food shortage, famine, tropical cyclone, flooding, loss of lives and property* are shown in power point to facilitate students' discussion.
9. Teacher ask students to give their answer to check their understanding.
10. Finally, base on the above tasks, the answer of the students and the photos above (which are shown in textbook P.50 and 53), students are asked to *write short paragraphs with appropriate connectives and a topic sentence* to explain the effects of climate on the life and economic activities of people.



S.4 Geography

Climate in temperate latitude regions

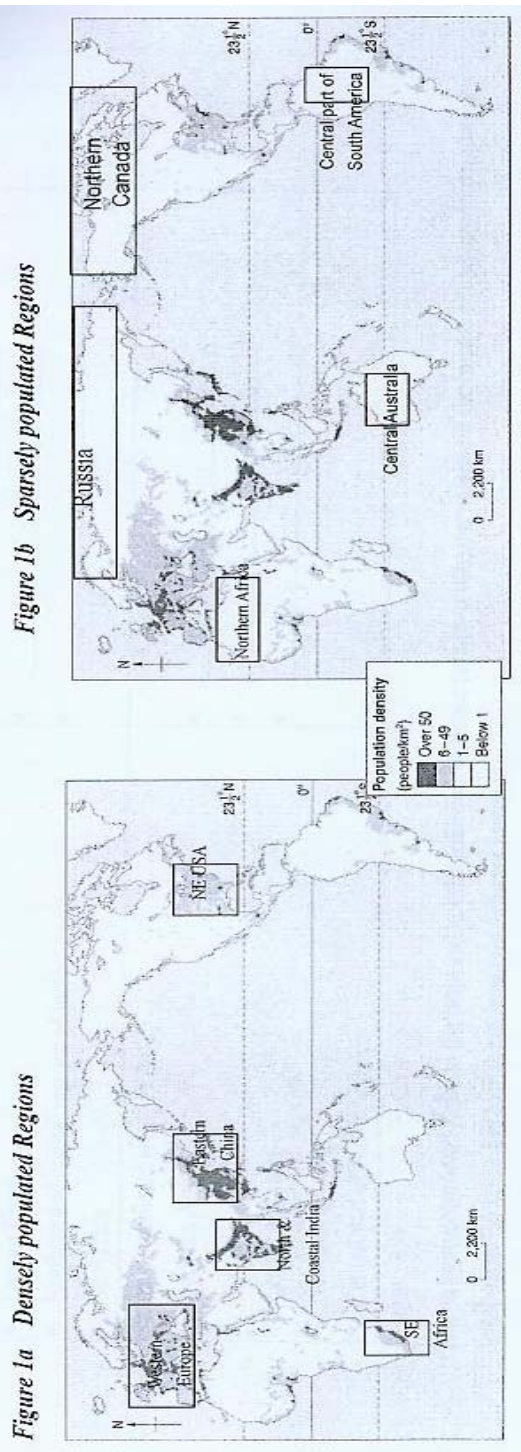
Worksheet 2

Name: _____ Class: _____ No.: _____ Date: _____



Writing

- Study the following figures and fill in the table on the next page to show the impact of climate on population distribution:



Characteristics of population distribution	Type of climate
Densely populated areas include: <ul style="list-style-type: none"> ◆ Western Europe ◆ NE USA ◆ Eastern China ◆ Northern and coastal regions of India ◆ SE Africa 	<hr/> <hr/> <hr/> <hr/> <hr/>
Sparsely populated areas include: <ul style="list-style-type: none"> ◆ Northern Africa ◆ Russia ◆ Central Australia ◆ Northern Canada ◆ Central part of South America 	<hr/> <hr/> <hr/> <hr/> <hr/>

2. With reference to the table above, use the following sentence pattern to write four sentences about the impact of climate on population distribution.

Example: Mild climate such as the tropical climate generally results in high population density
e.g. northern and coastal regions of India

- i.

- ii.

- iii.

- iv.

3. Read the following news cutting and fill in the concept map to show the negative impact brought by a heat wave:

Temperature records broken for many European cities

Since July this year, exceptionally high temperatures of over 35°C are recorded in many European cities. High temperatures in Europe have caused hill fires, killing over 30 people and forcing thousands to leave their homes. Over 7,000 hectares of forests have been destroyed. The heat wave also killed over 50 people and caused serious droughts. Farmers have to face crop failure. Even animals are affected.

According to the meteorological experts, the recent heat wave is caused by the presence of high pressure over western Europe. A meteorologist said, 'This is truly unexceptional. We all know that the world is getting warmer. But I always think that it will be 20 to 30 years later before the temperature will reach such a level.'

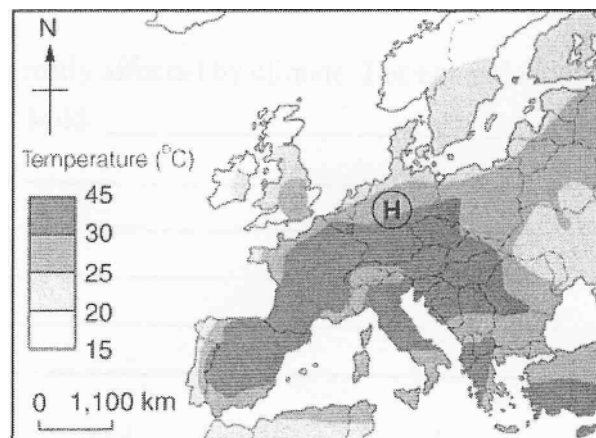
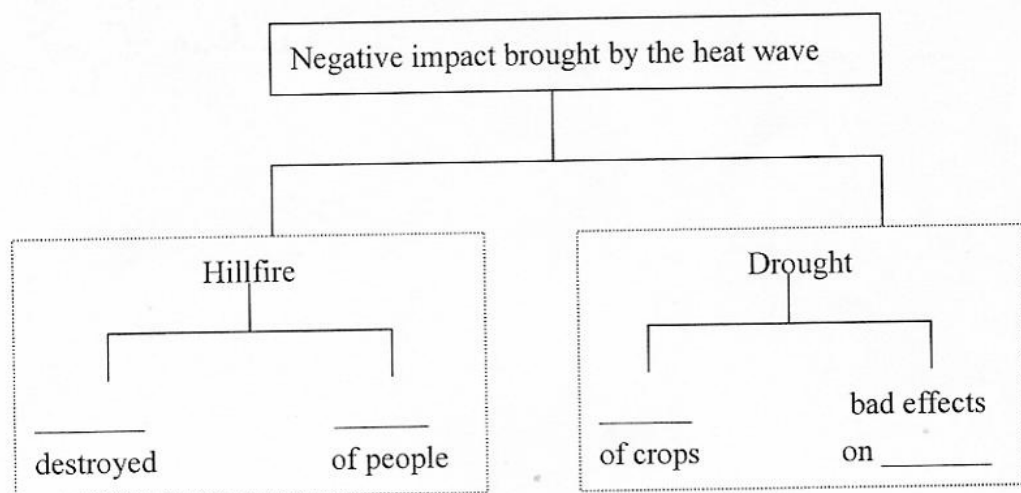


Figure 1 High July temperatures in Europe



4. With reference to the concept map above, use the following sentence pattern to write some sentences about the impact of heat wave on our daily life.

Example : A heat wave often causes / results in _____ and _____

(a) A heat wave often causes _____ and _____.

(b) A heat wave often results in _____

5. Based on Nos. 1-4 above and the following photos (also on pp. 50 and 53 of your textbook), write a short paragraph to explain the effects of climate on the life and economic activities of people.

These words may be useful to you:

drought, food shortage, famine, tropical cyclone, flooding, loss of lives and property

Start your paragraph like this:

Our life and economic activities are greatly affected by climate. For example, population density is affected by climate. Mild

