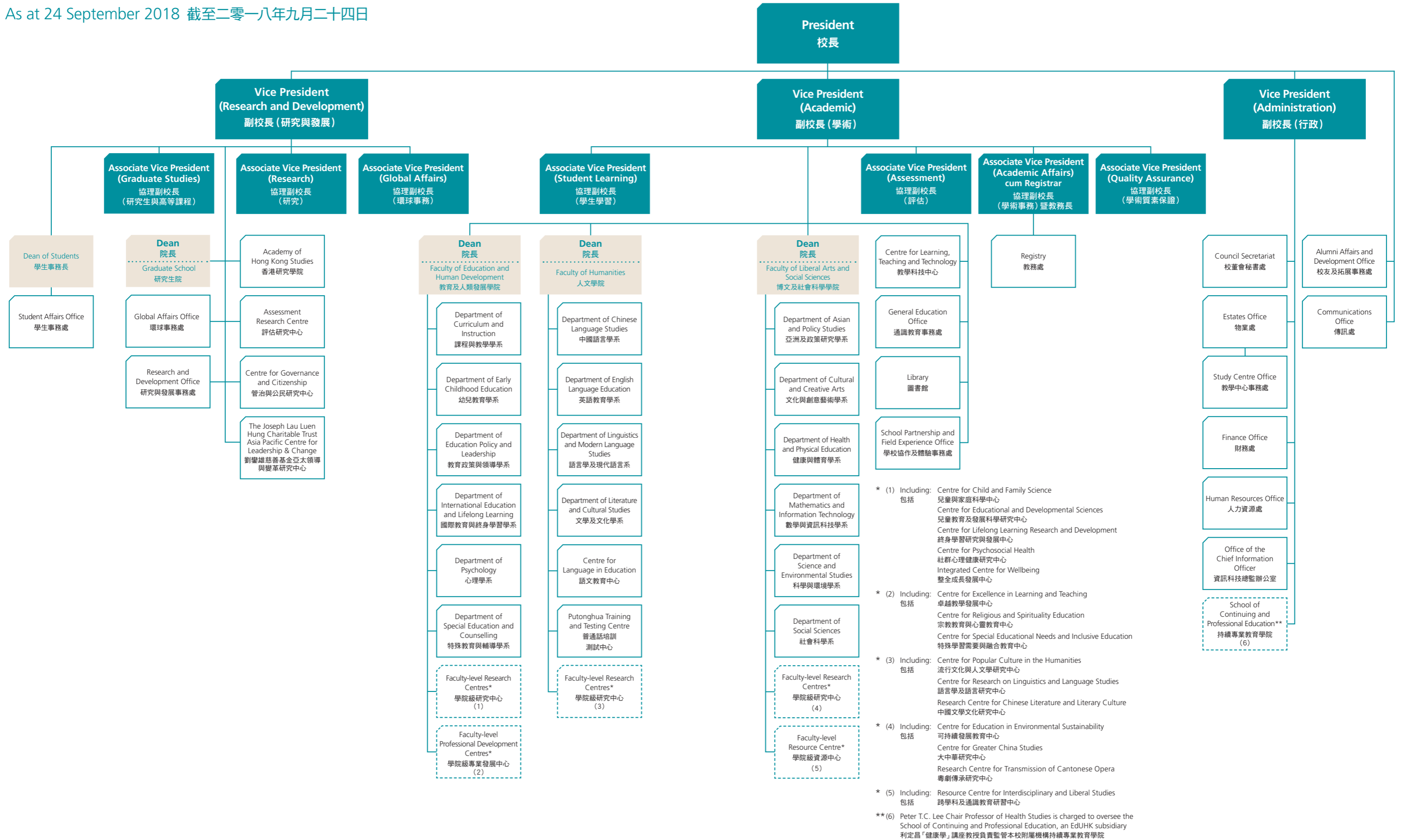


# Organisation Structure 組織架構

As at 24 September 2018 截至二零一八年九月二十四日



\* (1) Including: Centre for Child and Family Science  
包括 兒童與家庭科學中心  
Centre for Educational and Developmental Sciences  
兒童教育及發展科學研究中心  
Centre for Lifelong Learning Research and Development  
終身學習研究與發展中心  
Centre for Psychosocial Health  
社群心理健康研究中心  
Integrated Centre for Wellbeing  
整合成長發展中心

\* (2) Including: Centre for Excellence in Learning and Teaching  
包括 卓越教學發展中心  
Centre for Religious and Spirituality Education  
宗教教育與心靈教育中心  
Centre for Special Educational Needs and Inclusive Education  
特殊學習需要與融合教育中心

\* (3) Including: Centre for Popular Culture in the Humanities  
包括 流行文化與人文學研究中心  
Centre for Research on Linguistics and Language Studies  
語言學及語言研究中心  
Research Centre for Chinese Literature and Literary Culture  
中國文學文化研究中心

\* (4) Including: Centre for Education in Environmental Sustainability  
包括 可持續發展教育中心  
Centre for Greater China Studies  
大中華研究中心  
Research Centre for Transmission of Cantonese Opera  
粵劇傳承研究中心

\* (5) Including: Resource Centre for Interdisciplinary and Liberal Studies  
包括 跨學科及通識教育研習中心

\*\* (6) Peter T.C. Lee Chair Professor of Health Studies is charged to oversee the School of Continuing and Professional Education, an EdUHK subsidiary  
利定昌「健康學」講座教授負責監管本校附屬機構持續專業教育學院