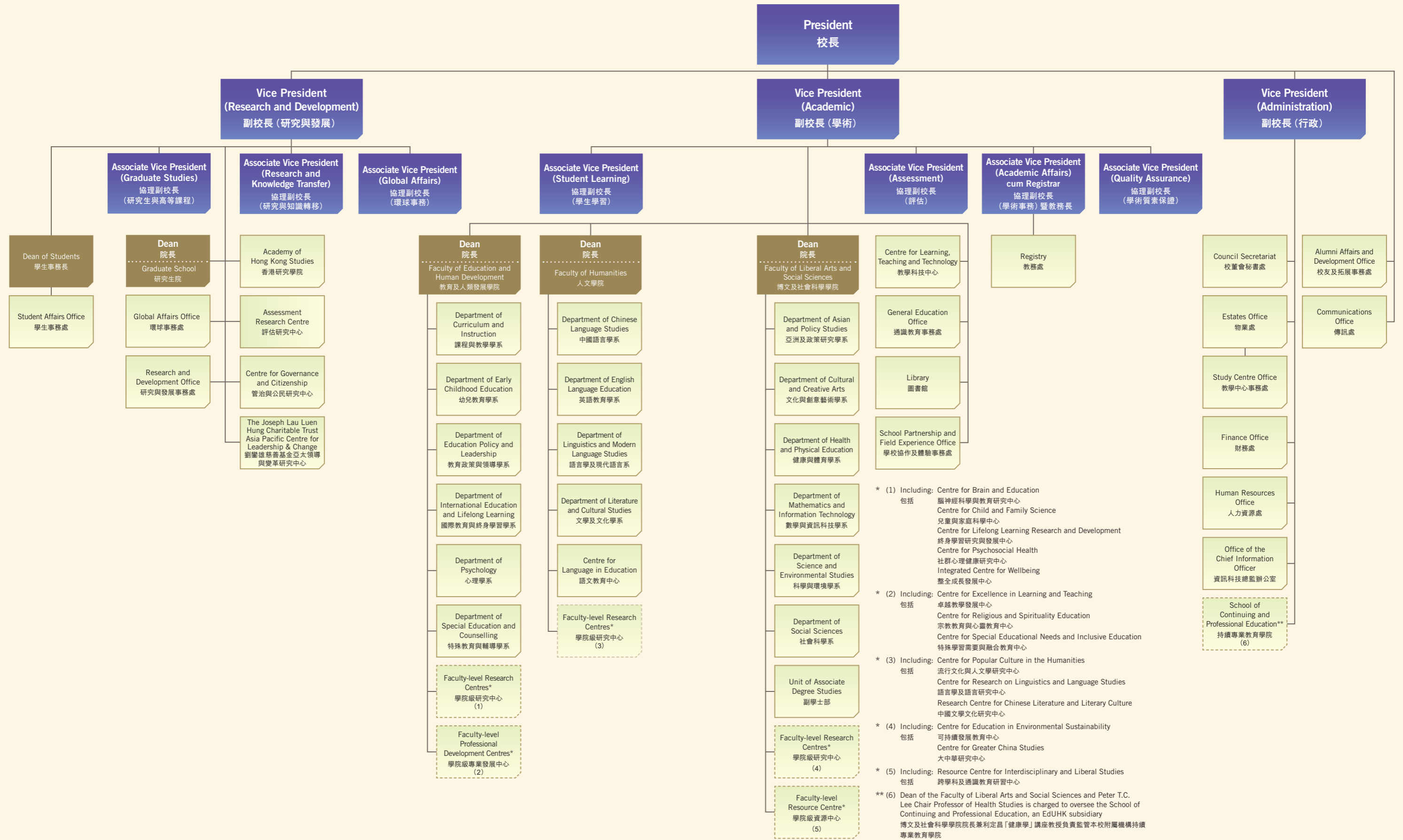


Organisation Structure 組織架構

As at 13 December 2017 截至二零一七年十二月十三日



* (1) Including: Centre for Brain and Education (包括 腦神經科學與教育研究中心)
Centre for Child and Family Science (兒童與家庭科學中心)
Centre for Lifelong Learning Research and Development (終身學習研究與發展中心)
Centre for Psychosocial Health (社群心理健康研究中心)
Integrated Centre for Wellbeing (整合成長發展中心)

* (2) Including: Centre for Excellence in Learning and Teaching (包括 卓越教學發展中心)
Centre for Religious and Spirituality Education (宗教教育與心靈教育中心)
Centre for Special Educational Needs and Inclusive Education (特殊學習需要與融合教育中心)

* (3) Including: Centre for Popular Culture in the Humanities (包括 流行文化與人文學研究中心)
Centre for Research on Linguistics and Language Studies (語言學及語言研究中心)
Research Centre for Chinese Literature and Literary Culture (中國文學文化研究中心)

* (4) Including: Centre for Education in Environmental Sustainability (包括 可持續發展教育中心)
Centre for Greater China Studies (大中華研究中心)

* (5) Including: Resource Centre for Interdisciplinary and Liberal Studies (包括 跨學科及通識教育研習中心)

** (6) Dean of the Faculty of Liberal Arts and Social Sciences and Peter T.C. Lee Chair Professor of Health Studies is charged to oversee the School of Continuing and Professional Education, an EdUHK subsidiary (博文及社會科學學院院長兼利定昌「健康學」講座教授負責監管本校附屬機構持續專業教育學院)